



*The Art and Design  
of Living Well*

[residencesglenwoodplace.com](http://residencesglenwoodplace.com)









## Index



Glenwood Place  
06-11



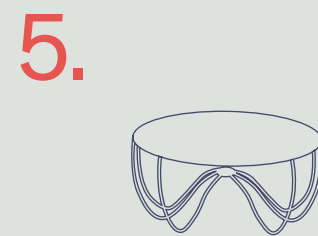
Raleigh  
12-13



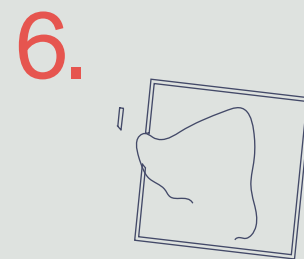
Map  
20-21



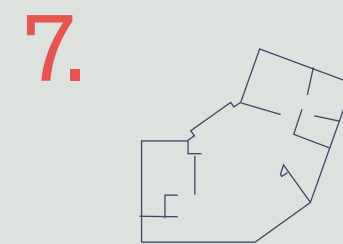
The Residences  
14-16



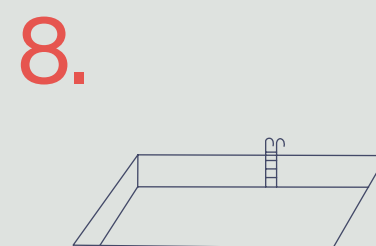
Interior Design  
17-19



Art  
22-23



Floorplans  
8-9



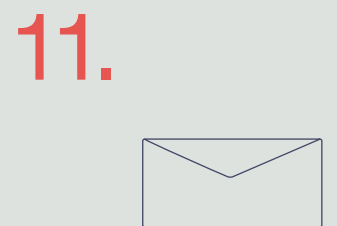
Amenities  
8-9



Retail  
3-8



The Team  
10-20



Contact  
38

A photograph of two women lying on their stomachs on a grassy lawn. The woman on the left is wearing a black tank top and denim shorts, with her arms raised. The woman on the right is wearing a black tank top and has her arms raised. They are both smiling and looking towards the camera. The background is a lush green lawn.

# Make *connections*, mingle with friends, *enjoy* outdoor living and *experience* all

*The Residences*  
Glenwood Place

*Raleigh*, NC 27612

Contemporary architecture, unrivaled amenities, local retail, and beautiful landscape design come together at The Residences at Glenwood Place. Located inside the beltline and connected to the Greenway in the heart of Raleigh, this multi-faceted lifestyle destination with airy, thoughtfully finished apartments places residents at the nexus of The Triangle's finest culture, cuisine, and entertainment.

As a fully engaged member of its larger surrounding community, The Residences at Glenwood Place is proud to showcase the work of local artists throughout amenity spaces and across the grounds for enjoyment by all.



# 01

*Glenwood Place*



# Glenwood *Place*

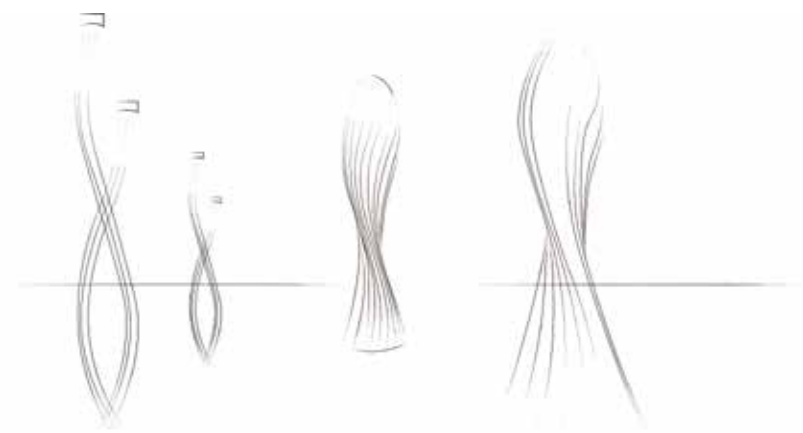


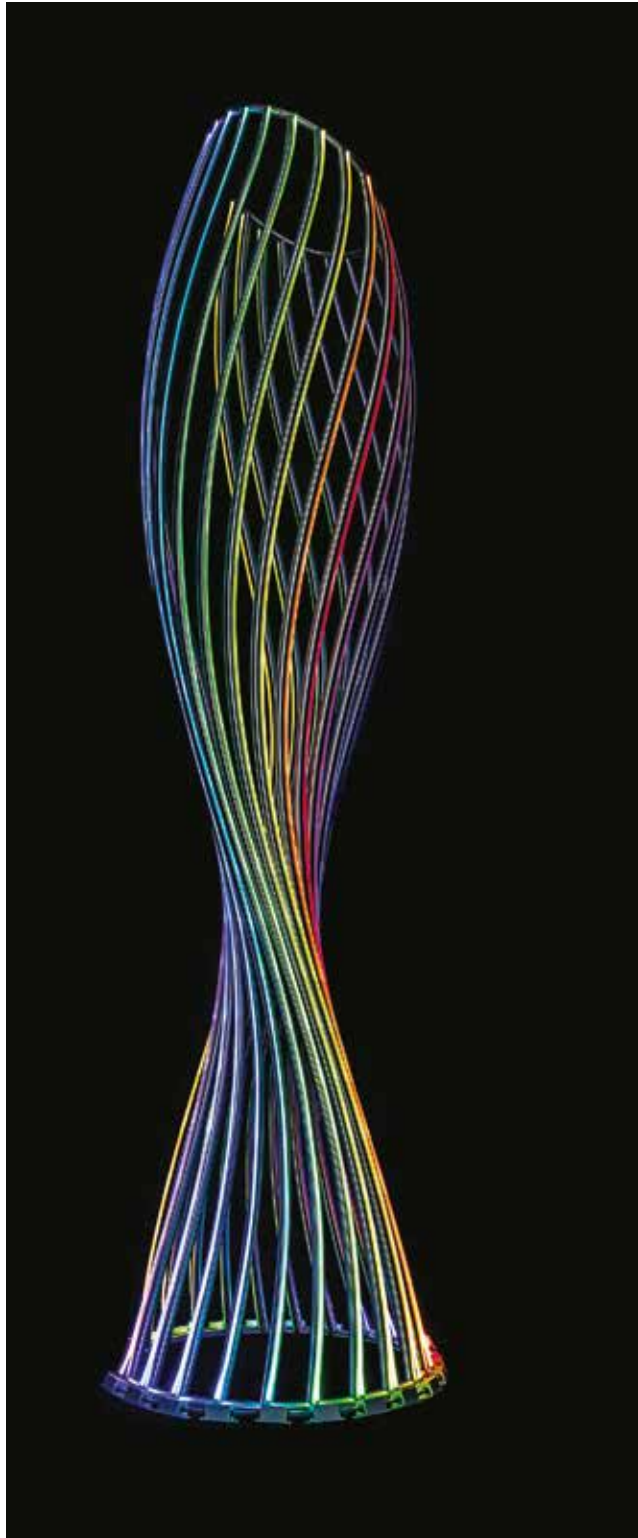
DISCOVER THE JOY OF URBAN AND SUBURBAN  
LIVING IN A SINGLE DESTINATION



A vibrant mix of contemporary apartments, street-level retail, and Class A office space come together at Glenwood Place. This thoughtfully conceived master-planned community features exceptional landscaping, manicured walkways, and lively open spaces by renowned al landscape architect Frank Liggett.

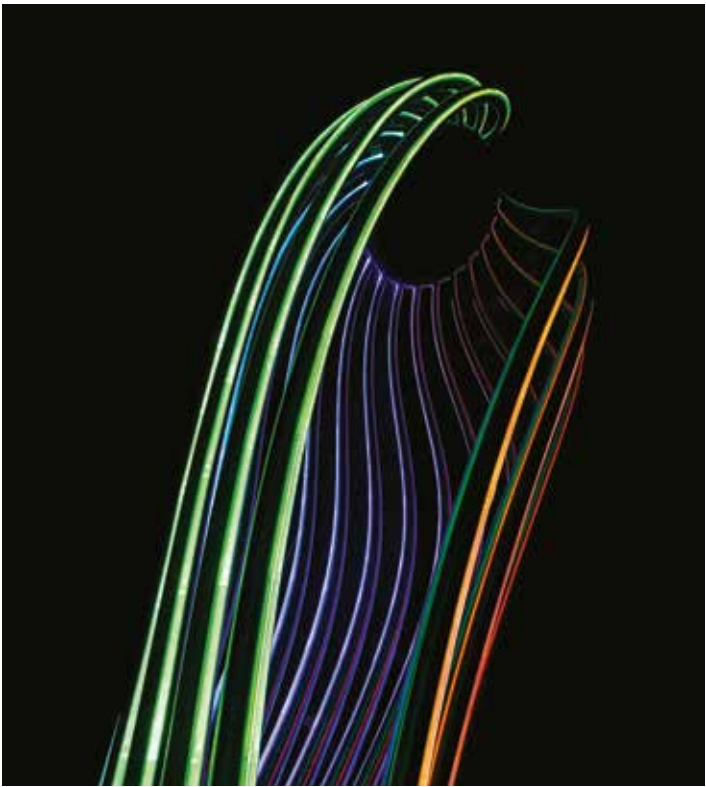
A curated array of shops and restaurants brings the nveniences and excitement of an urban center into this axed natural setting.



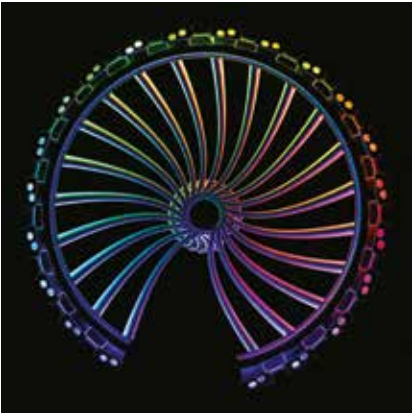


FRONT VIEW 01

# Glenwood Place Sculptures



SIDE VIEW 04



BOTTOM VIEW 02

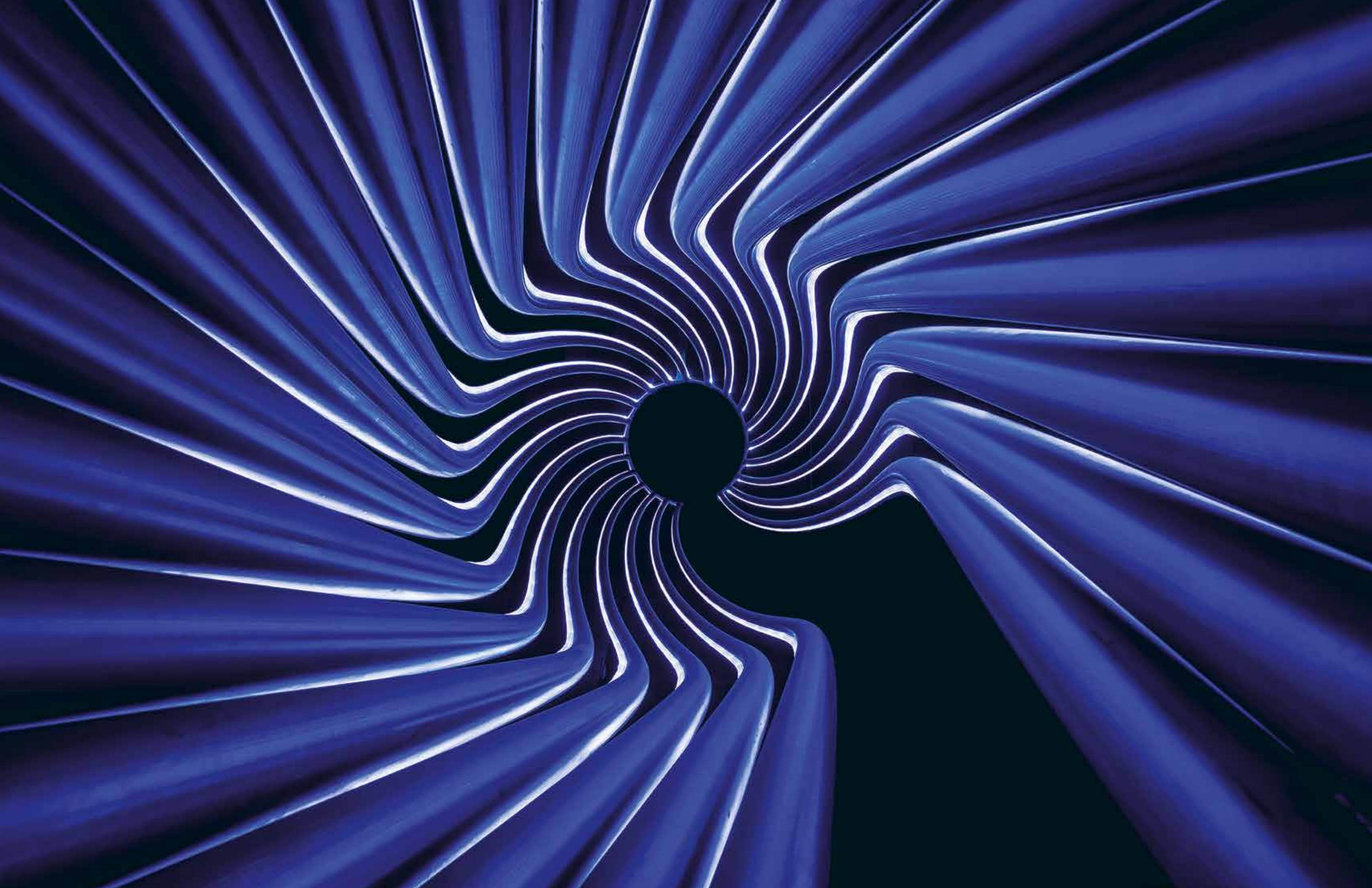


BOTTOM VIEW 03

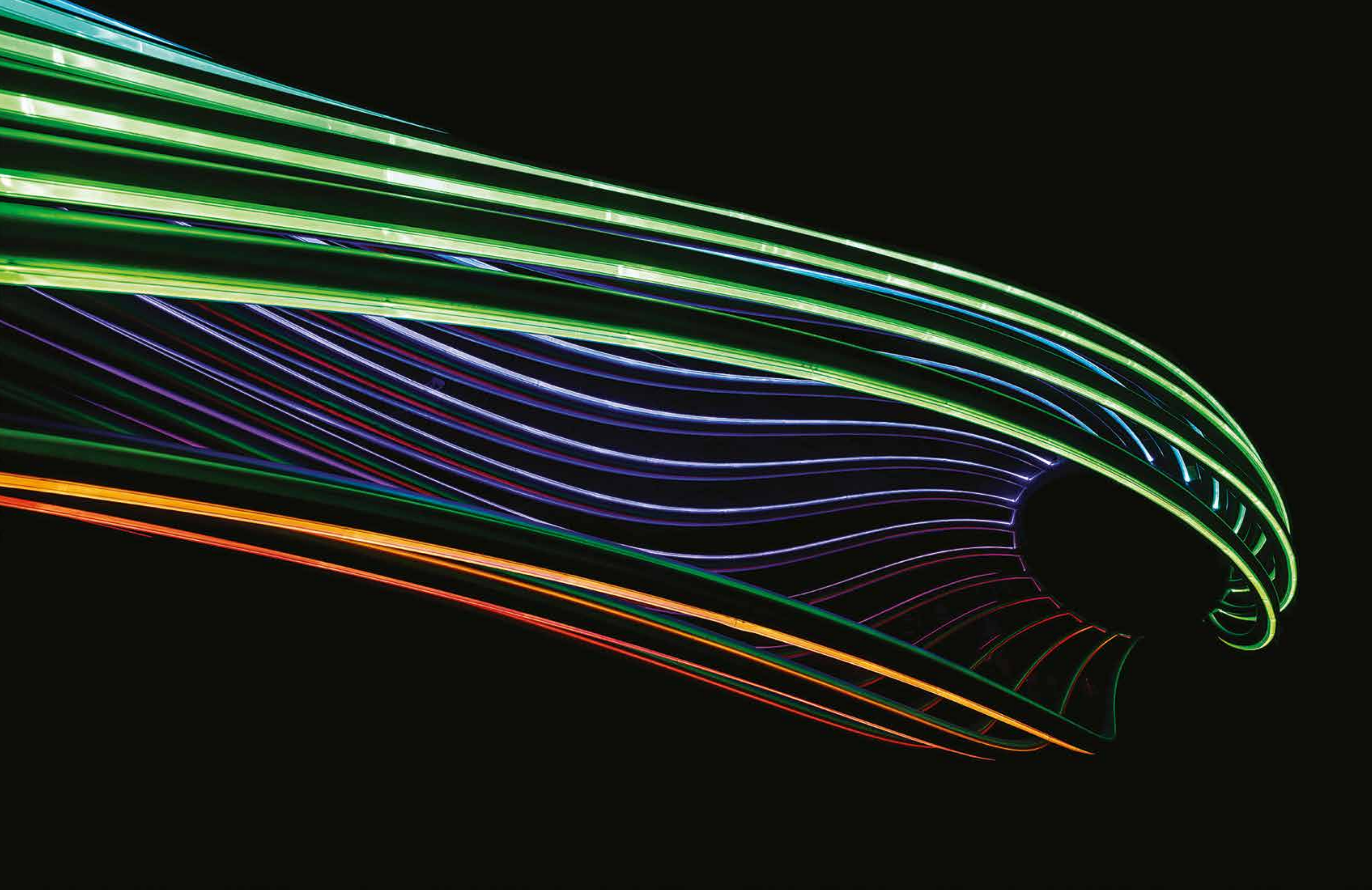


SIDE VIEW 05











# A welcoming neighborhood *surrounded* by the *best* of Raleigh



The Residences at Glenwood is ideally located in The Triangle, just 10 minutes from downtown Raleigh, and even closer to North Hill's midtown neighborhood, bursting with an eclectic array of shopping, dining, and entertainment offerings. For those seeking escape in to the very best of the region's natural landscape, nearby access to the Capital Area Greenway is an unparalleled treasure. With 28 individual trails totaling over 100 miles of paved pathways, walkers, runners, bikers, and skaters can explore the Greenway for hours on end throughout every season.





03

*Raleigh*





# *Raleigh*



IN RALEIGH, WORLD-CLASS ARTS, CULTURE, AND EDUCATION MEET WORLD-LEADING RESEARCH AND TECHNOLOGY. IT IS A NATURALLY BEAUTIFUL CITY BURSTING WITH OPPORTUNITIES

Recognized by Rolling Stone magazine as one of the top eight emerging music cities in the USA (February 2020), and home to Fortune 500 companies as well as prestigious universities, Raleigh attracts a broad swath of people whose common thread is a desire to live life to its fullest.

The quality of life in the city and its suburban neighborhoods is further enhanced by the beautiful natural environment, which inspired Raleigh's moniker, "City of Oaks", and by many examples of exceptional historic and modern architecture.

03

*Map*







References  
*Points in the map*

- 01 Sojourn Glenwood Place Apartments
- 02 Ladyfingers (Glenwood)
- 03 Iron Oaks Taproom
- 04 Sushi Mon
- 05 /sôst/
- 06 Bartaco
- 07 The Cowfish Sushi Burger Bar
- 08 Rosewater Kitchen Bar
- 09 STIR
- 10 The Capital Grille
- 11 Duke Raleigh Hospital
- 12 Aldert Root Elementary School
- 13 Carolina Country Club
- 14 Glenwood Grill
- 15 The Oak Kitchen Bourbon Bar
- 16 REX Hospital
- 17 Lacy Elementary School
- 18 Wegmans
- 19 Costco Wholesale
- 20 The Ritz
- 21 North Carolina Museum of Art
- 22 North Carolina State Fair
- 23 Whole Foods Market
- 24 Jaycee Park
- 25 Hayes Barton Cafe and Dessertery
- 26 The Rialto Theatre
- 27 Ladyfingers Caterers (Highpark)
- 28 Belverde Park
- 29 Alamo Drafthouse Cinema Raleigh
- 30 North Carolina State University
- 31 Raleigh Country Club

-  Raleigh Greenway System Bike Path
-  Raleigh Greenway SystemPath
-  Raleigh Union Station
-  Raleigh - Durham International Airport

References  
Zoom Areas



Glenwood Place *Points of interest*  
Zoom A

- 1 Sojourn Glenwood Place Apartments
- 2 Ladyfingers Ladyfingers Market and Eatery Glenwood
- 3 Iron Oaks Taproom
- 4 Sushi Mon
- 5 /sôst/



North Hills *Points of interest*  
Zoom B

- 1 Midtown Grille
- 2 Coquette Brasserie
- 3 Bartaco
- 4 Fox and Hound Sports Tavern
- 5 41Hundred
- 6 The Cowfish Sushi Burguer Bar
- 7 Rosewater Kitchen Bar
- 8 STIR
- 9 The Capital Grille
- 10 Level7
- 11 CO
- 12 Chuy's
- 13 Vita Vite



Downtown *Points of interest*  
Zoom C

- 1 Public Supermarket at Peace
- 2 Cortez Seafood and Cocktail
- 3 C. Grace (Cocktail Bar)
- 4 42nd Street Oyster Bar
- 5 North Carolina Museum of Natural Sciences
- 6 North Carolina Museum of History
- 7 Second Empire Restaurant and Tavern
- 8 Taverna Agora Greek (Kitchen and Bar)
- 9 Dram and Draught (Dine-in)
- 11 Origin Hotel Raleigh
- 12 Morgan Street Food Hall
- 13 O-Ku Sushi
- 14 CAM Raleigh (Museum)
- 15 Marbles Kids Museum
- 16 The Green Light (Cocktail Bar)
- 17 Foundation
- 18 Beasley's Kitchen + Honey
- 19 Fox Liquor Bar
- 20 Whiskey Kitchen
- 21 Artspace (Art Center)
- 22 The Fiction Kitchen
- 23 Poole's
- 24 Red Hat Amphitheater



Village District *Points of interest*  
Zoom D

- 1 Benelux Coffee
- 2 so•ca
- 3 Starbucks
- 4 Cantina 18
- 5 CAVA
- 6 Café Carolina and Bakery
- 7 Ajisai Japanese Fusion
- 8 Cape Fear Seafood Company
- 9 Tazza Kitchen
- 10 The Fresh Market
- 11 Harris Teeter



# 04

*The Residences*



# *The Art & Design of Living Well*



LIGHT-FILLED RESIDENCES WITH SLEEK  
CONTEMPORARY FINISHES AND THOUGHTFUL DETAILS

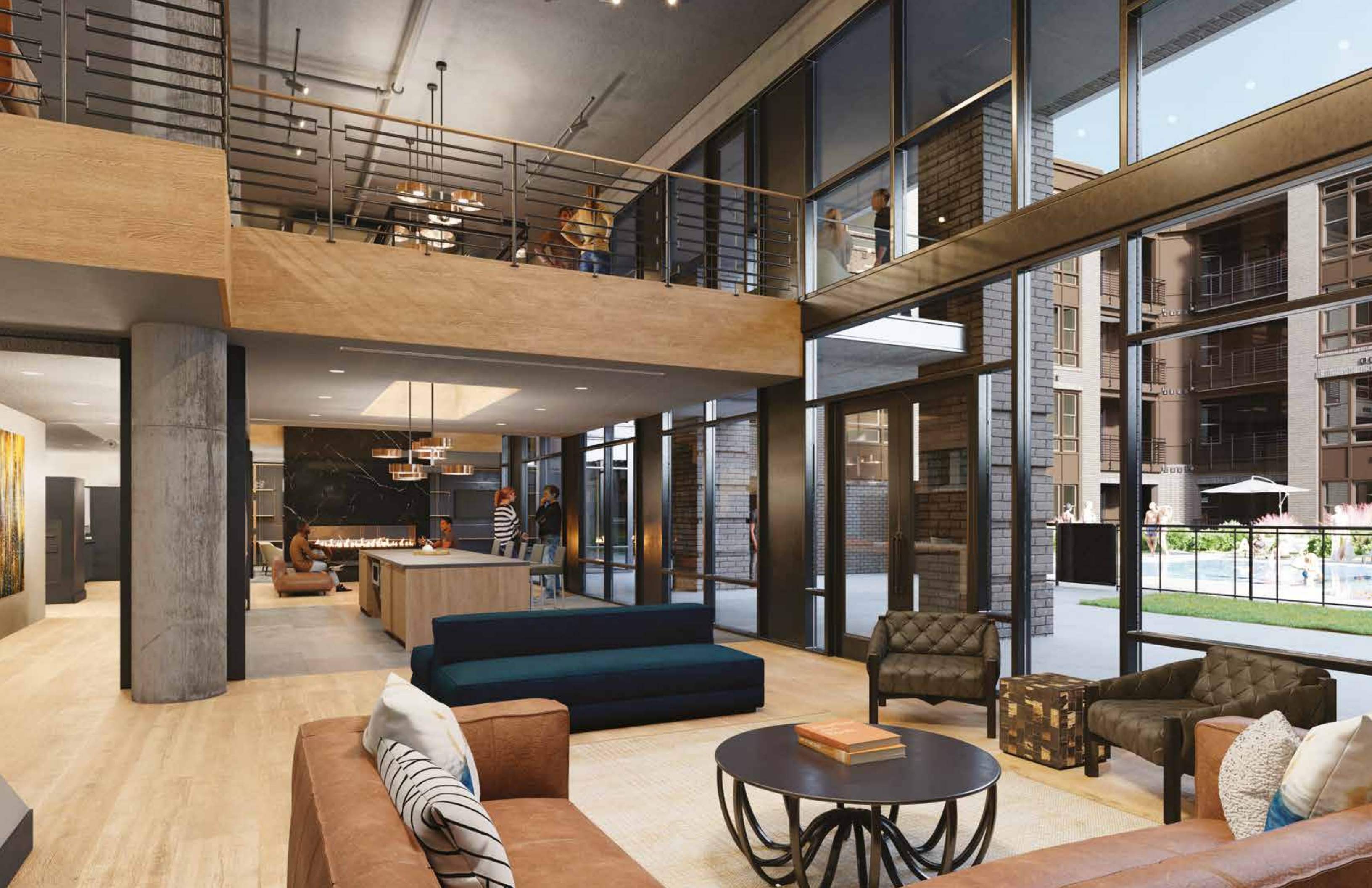


High ceilings, large windows, wide-plank flooring, and flowing interiors set the stage for a casually luxurious lifestyle. Most residences offer a private balcony or terrace and select homes feature floor-to-ceiling windows. Kitchens with sleek cabinetry, under-cabinet lighting, and quartz countertops are as ideal for whipping up a homemade feast as they are for serving gourmet takeout from local favorites, including the delicious Ladyfingers, which is opening its first market and eatery at Glenwood Place.

In addition, stone-clad bathrooms with backlit mirrors invite you to pamper yourself in spa-like surroundings while seamlessly integrated market-leading technology throughout each home caters to comfort and peace of mind with everything from automated lighting and climate control to state-of-the-art access control features.



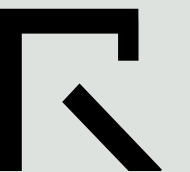
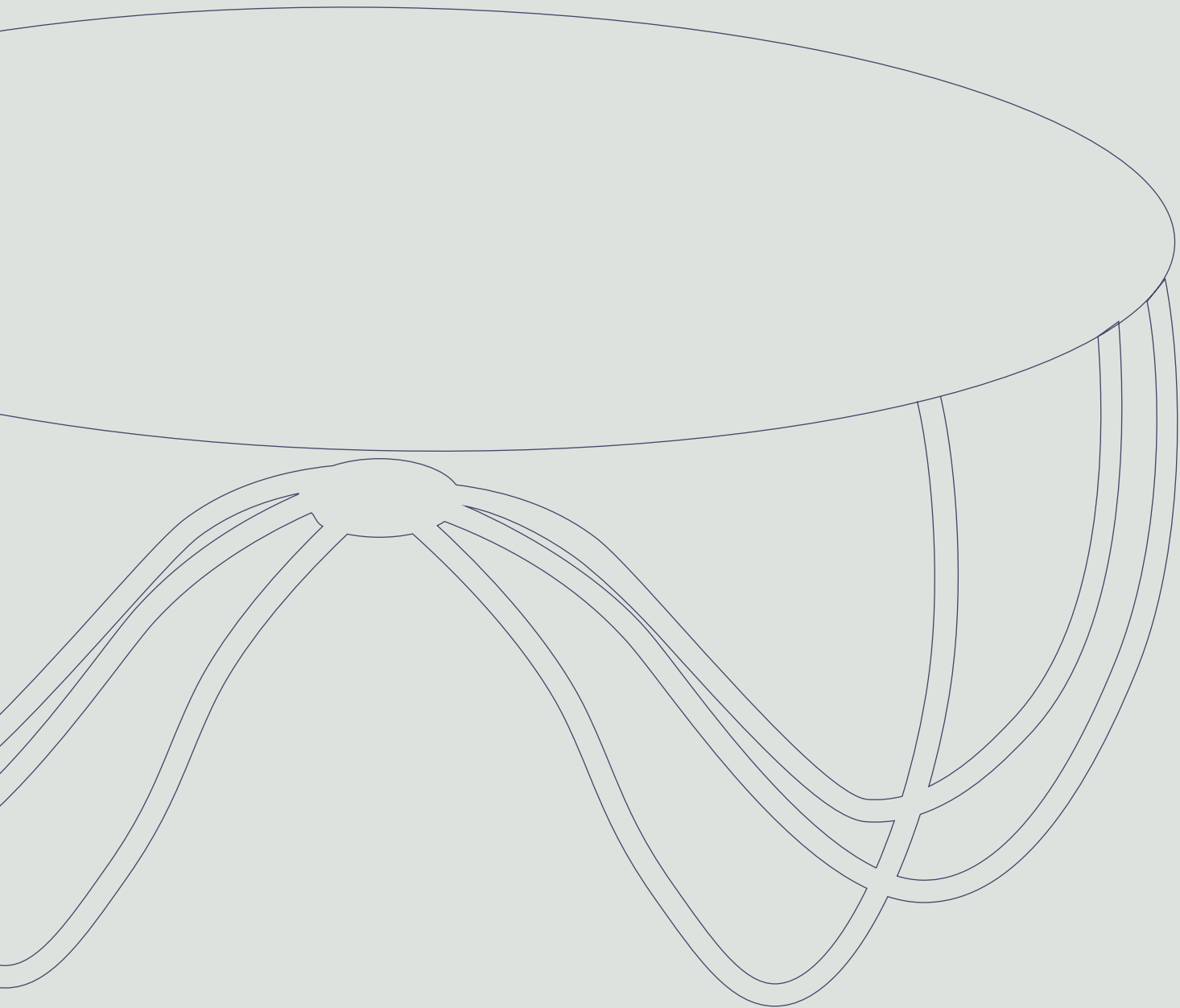






# 05

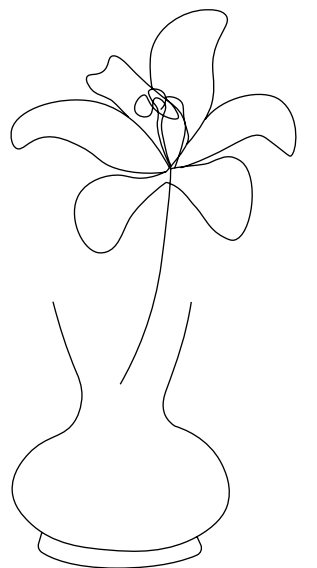
*Interior Design*





# Eco-savvy, stylish, And inspired *by Art*

From high-performance flooring to masterfully crafted stonework, The Residences at Glenwood Place offers homes where form and function are equally prized. Materials and appliances have been thoughtfully selected in light of their aesthetic beauty as well as their ability to help minimize negative impacts on people and the planet.















# Features



## 01 *The Basics*

- 1. 9' to 10' ceiling heights
- 2. Wide-plank wood-style flooring throughout living areas
- 3. Enkasonic underlayment between floors for enhanced sound insulation
- 4. Black-matte ceiling fans in all bedrooms
- 5. Stratis app-based automation: climate control through Nest Thermostats, water leak sensors, lighting, outlets, and apartment and exterior doors
- 6. Floor-to-ceiling windows in select residences
- 7. GE front-loading washer and dryer (Except in Studios)



## 02 *The Kitchen*

- 1. Republic Elite white cabinetry with matte black contemporary hardware and under-cabinet lighting
- 2. Absolute Stone Noche quartz countertops
- 3. Glossy grey stacked or herringbone-pattern subway tile backsplash
- 4. GE stainless steel French-door refrigerator with filtered water dispenser in the door (Except in Studios)
- 5. GE electric slide-in range and oven
- 6. GE stainless steel dishwasher with dual spray arms
- 7. GE wine refrigerator in select residences
- 8. Soft close cabinetry
- 9. Under cabinet lighting



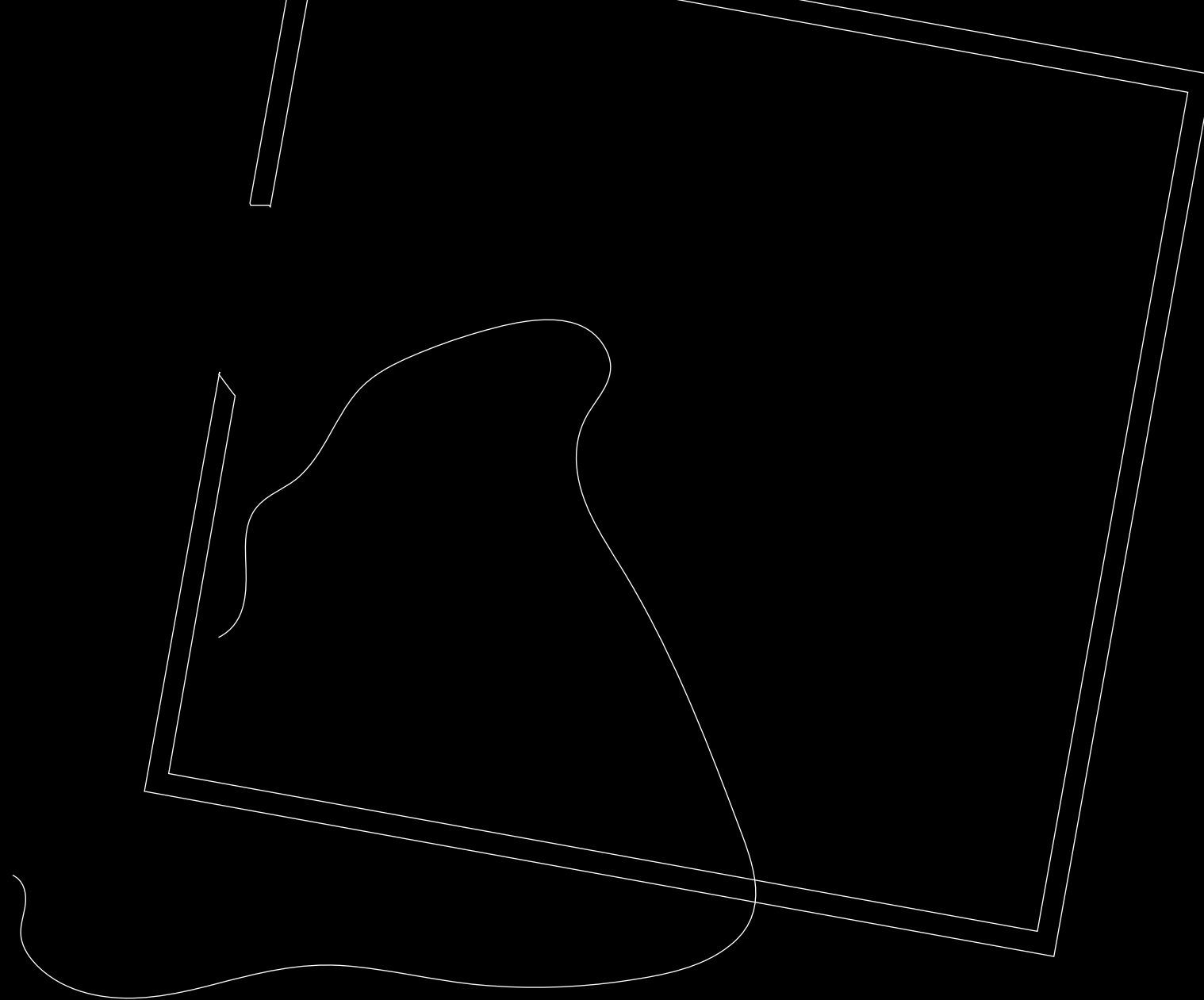
## 03 *The Bathroom*

- 1. DuraCeramic Tile flooring
- 2. Absolute Stone Noche quartz countertop
- 3. Under-mounted sink
- 4. Brushed nickel fixtures
- 5. Carrara-style shower with glass door in master bathrooms
- 6. Bathtub / shower combination in all secondary bathrooms
- 7. Backlit mirror
- 8. Soft close cabinetry



# 06

*Art*



# Art Collection

*An indoor-outdoor showcase for original  
works of art* **BY LOCAL ARTISTS**

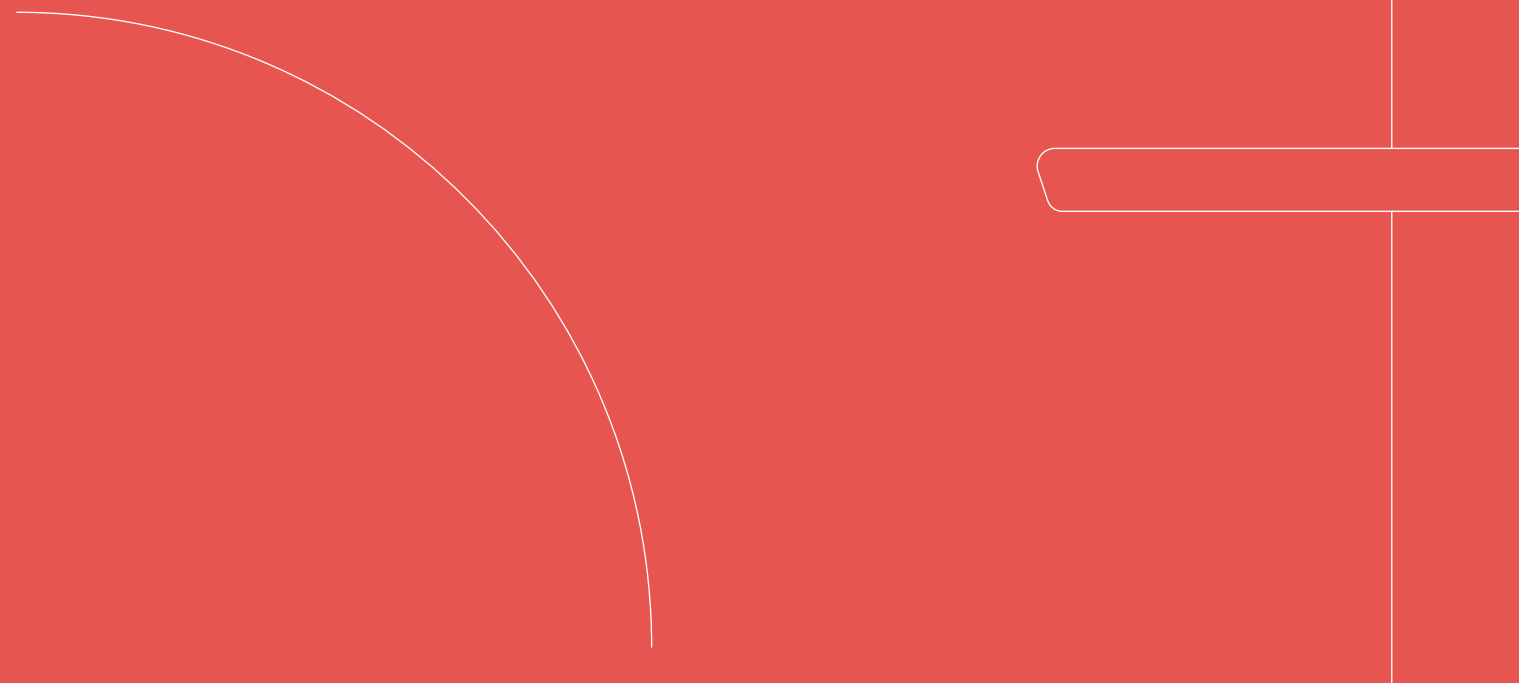


Glenwood Place celebrates and supports Raleigh's dynamic art scene with a thoughtfully curated and commissioned collection of original works by local artists. Lobbies, lounges, and co-working areas feature prints and paintings that elevate the tenor of these shared amenities, giving them the feeling of a private gallery. Outside, sculptures are prominently displayed across the landscaped grounds and are illuminated at night for a dramatic effect. Art books in the amenity spaces enable residents and guests to learn more about the pieces on display inside and out.



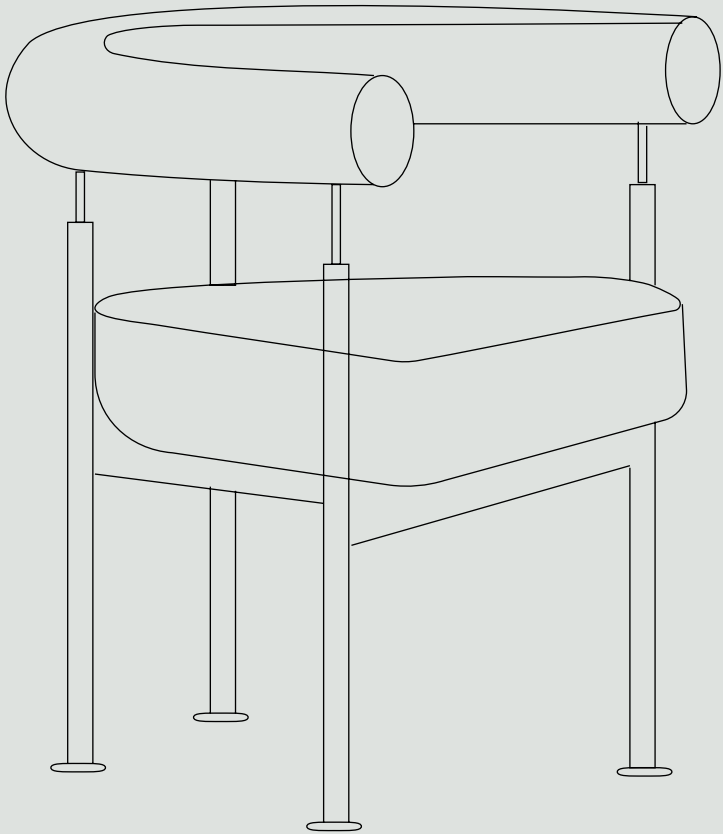
# 07

*Floor Plans*





*From spacious studios  
to expansive townhouses,  
there is a perfect floor plan  
for every lifestyle*





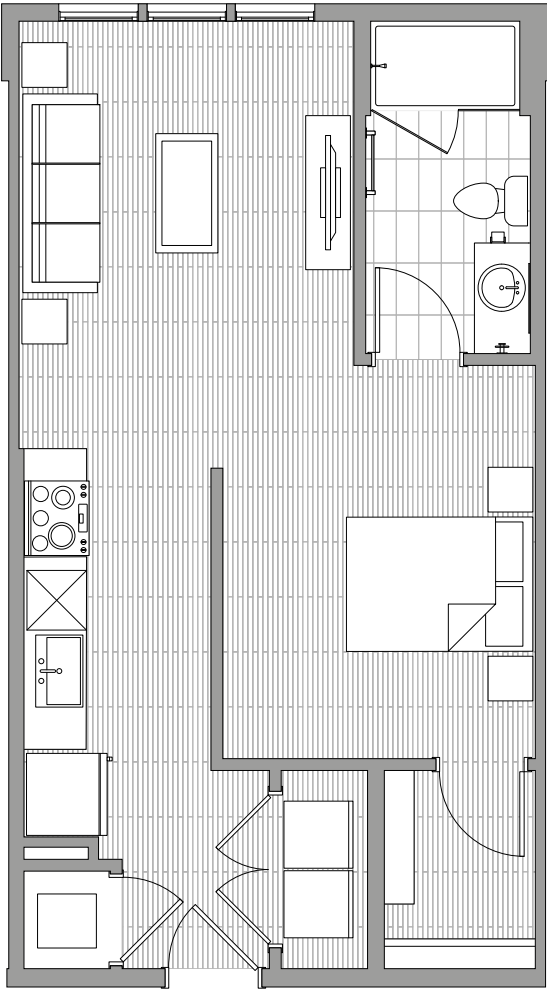
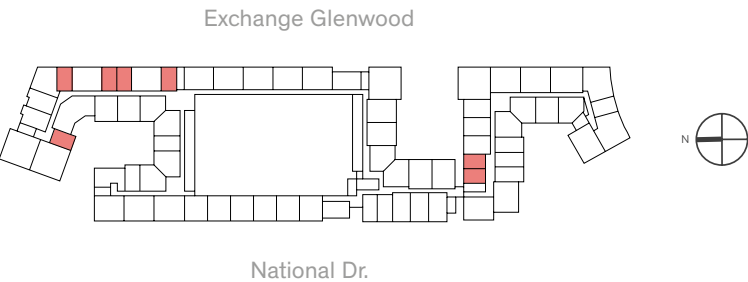
# Type S1

501 SQ.FT.

M2 527 SQ.FT.

Units 229, 230, 329, 330, 429, 430

- 1 BEDROOM
- 1 BATHROOM

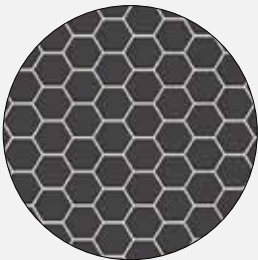


THE  
RESIDENCES  
GLENWOOD PLACE

## PACKAGE A



Kitchen Backsplash  
Herringbone Pattern



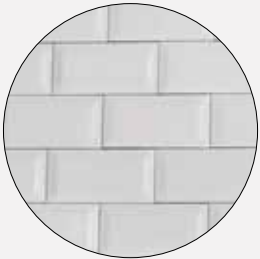
Shower pan Tile  
Pattern



LVT Dark Wood  
Flooring

Units 347, 546, 547, 221,  
227, 229, 230, 232, 321,  
327, 329, 330, 521, 527,  
529, 530

## PACKAGE B



Kitchen Backsplash  
Horizontal Stack



Shower pan Tile  
Pattern



LVT Light Wood  
Flooring

Units 247, 446, 447,  
121, 421, 427, 429, 430

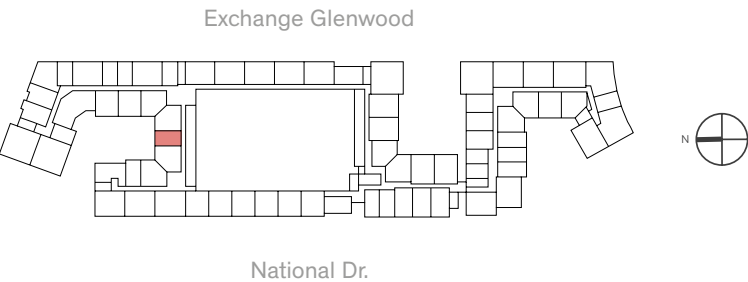
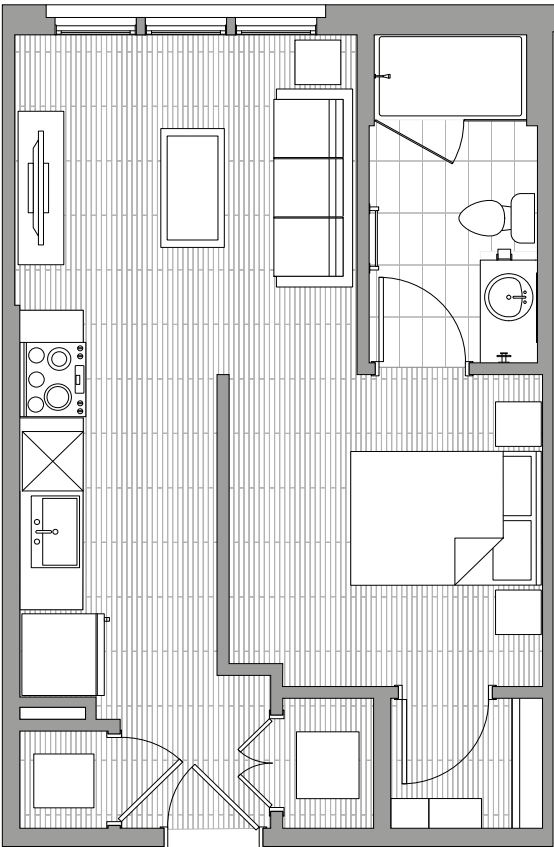
RESIDENCESGLENWOODPLACE.COM

RENDERINGS ARE AN ARTIST'S CONCEPTION AND ARE INTENDED ONLY AS A GENERAL REFERENCE.  
FEATURES, MATERIALS, FINISHES AND LAYOUT OF SUBJECT UNIT MAY BE DIFFERENT THAN SHOWN.

# Type S1<sup>M1</sup>

590 SQ.FT.

- 1 BEDROOM
- 1 BATHROOM



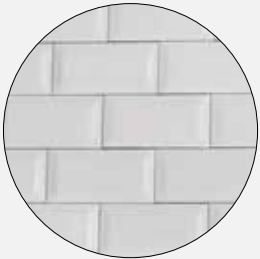
THE RESIDENCES  
GLENWOOD PLACE

PACKAGE A



Kitchen Backsplash  
Herringbone Pattern

PACKAGE B



Kitchen Backsplash  
Horizontal Stack



Shower pan Tile  
Pattern



Shower pan Tile  
Pattern



LVT Dark Wood  
Flooring



LVT Light Wood  
Flooring

Units 215, 315, 515

Units 115, 415

RESIDENCESGLENWOODPLACE.COM

RENDERINGS ARE AN ARTIST'S CONCEPTION AND ARE INTENDED ONLY AS A GENERAL REFERENCE. FEATURES, MATERIALS, FINISHES AND LAYOUT OF SUBJECT UNIT MAY BE DIFFERENT THAN SHOWN.



# Type S2

595 SQ.FT.

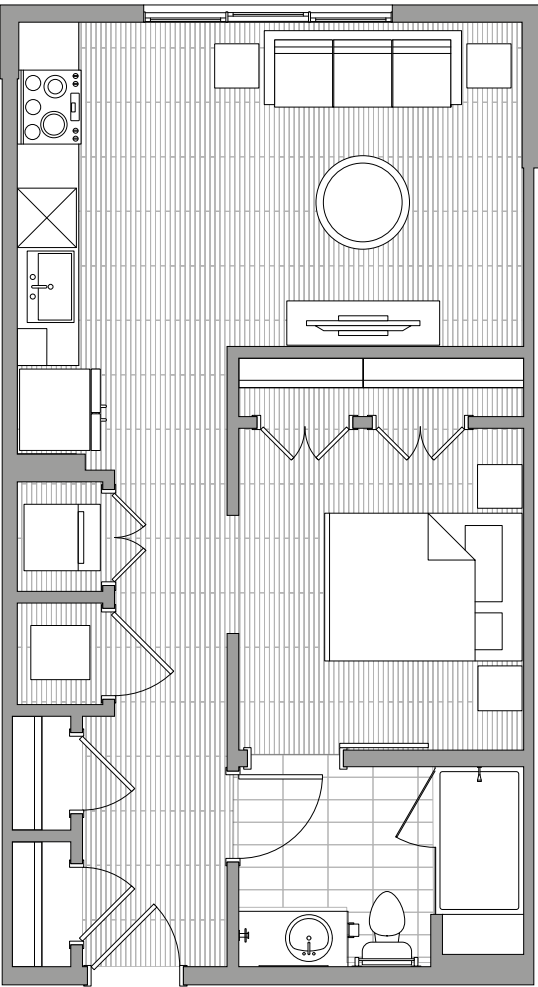
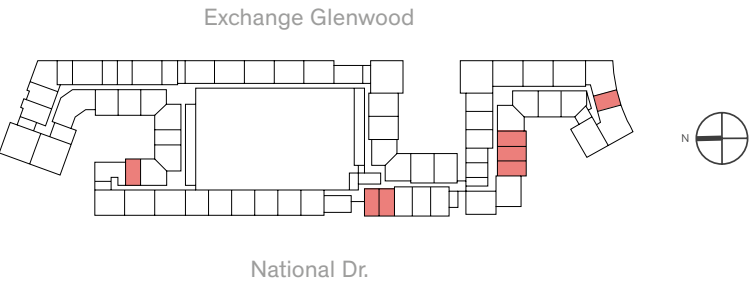
M1 621 SQ.FT.

Units 264, 265, 363, 364, 365, 463,  
464, 465, 563, 564, 565

M2 593 SQ.FT.

Units 256, 356, 456

- 1 BEDROOM
- 1 BATHROOM

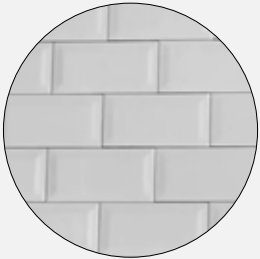


PACKAGE A



Kitchen Backsplash  
Herringbone Pattern

PACKAGE B



Kitchen Backsplash  
Horizontal Stack



Shower pan Tile  
Pattern



Shower pan Tile  
Pattern



LVT Dark Wood  
Flooring



LVT Light Wood  
Flooring

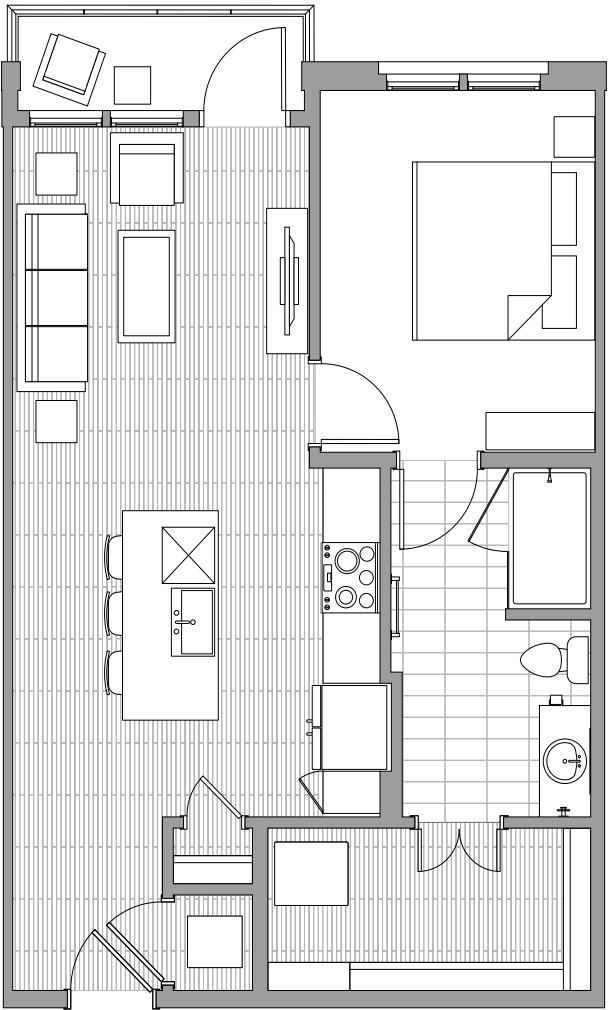
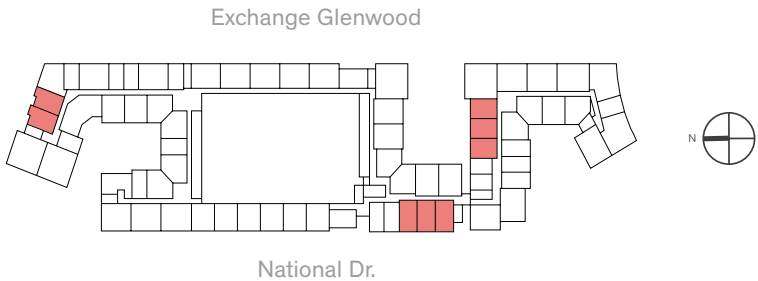
Units 171, 172, 272, 471,  
472, 212, 312, 512, 363,  
364, 365, 563, 564,  
565, 356

Units 371, 372, 571, 572,  
412, 263, 264, 265,  
463, 464, 465,  
256, 456

# Type A1

712 SQ.FT.

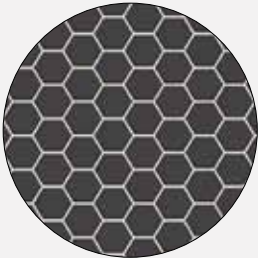
- 1 BEDROOM
- 1 BATHROOM



PACKAGE A



Kitchen Backsplash  
Herringbone Pattern



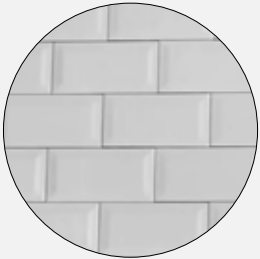
Shower pan Tile  
Pattern



LVT Dark Wood  
Flooring

Units 348, 349, 548,  
549, 550, 168, 169, 170,  
268, 269, 270, 468, 469,  
470, 224, 225, 324, 325,  
524, 525

PACKAGE B



Kitchen Backsplash  
Horizontal Stack



Shower pan Tile  
Pattern



LVT Light Wood  
Flooring

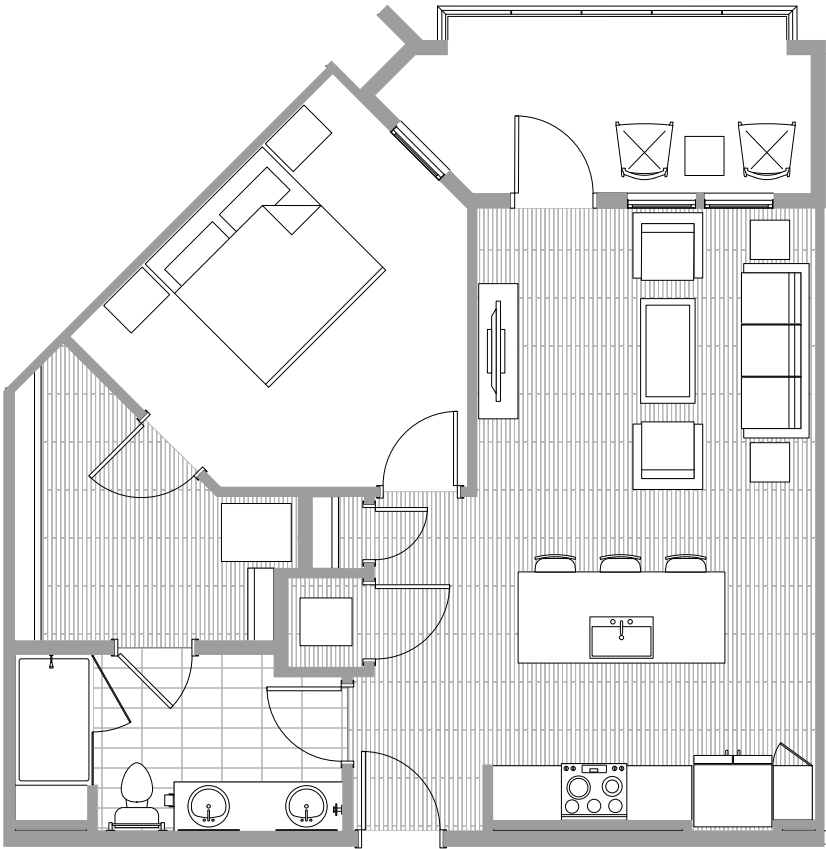
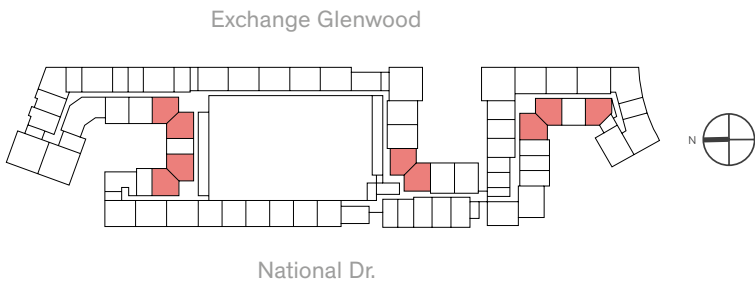
Units 248, 249, 250,  
350, 448, 449, 450,  
368, 369, 370, 568,  
569, 570, 124,  
424, 425



# Type A3

782 SQ.FT.

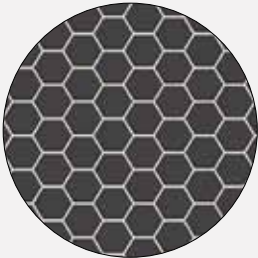
- 1 BEDROOM
- 1 BATHROOM



PACKAGE A



Kitchen Backsplash  
Herringbone Pattern



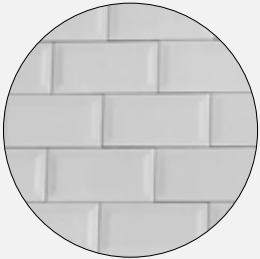
Shower pan Tile  
Pattern



LVT Dark Wood  
Flooring

Units 359, 361, 362,  
559, 561, 562, 242, 243,  
442, 443, 213, 214, 216,  
217, 313, 314, 316, 317,  
513, 514, 516, 517

PACKAGE B



Kitchen Backsplash  
Horizontal Stack



Shower pan Tile  
Pattern



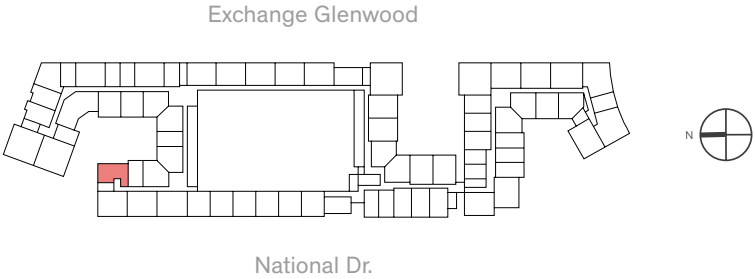
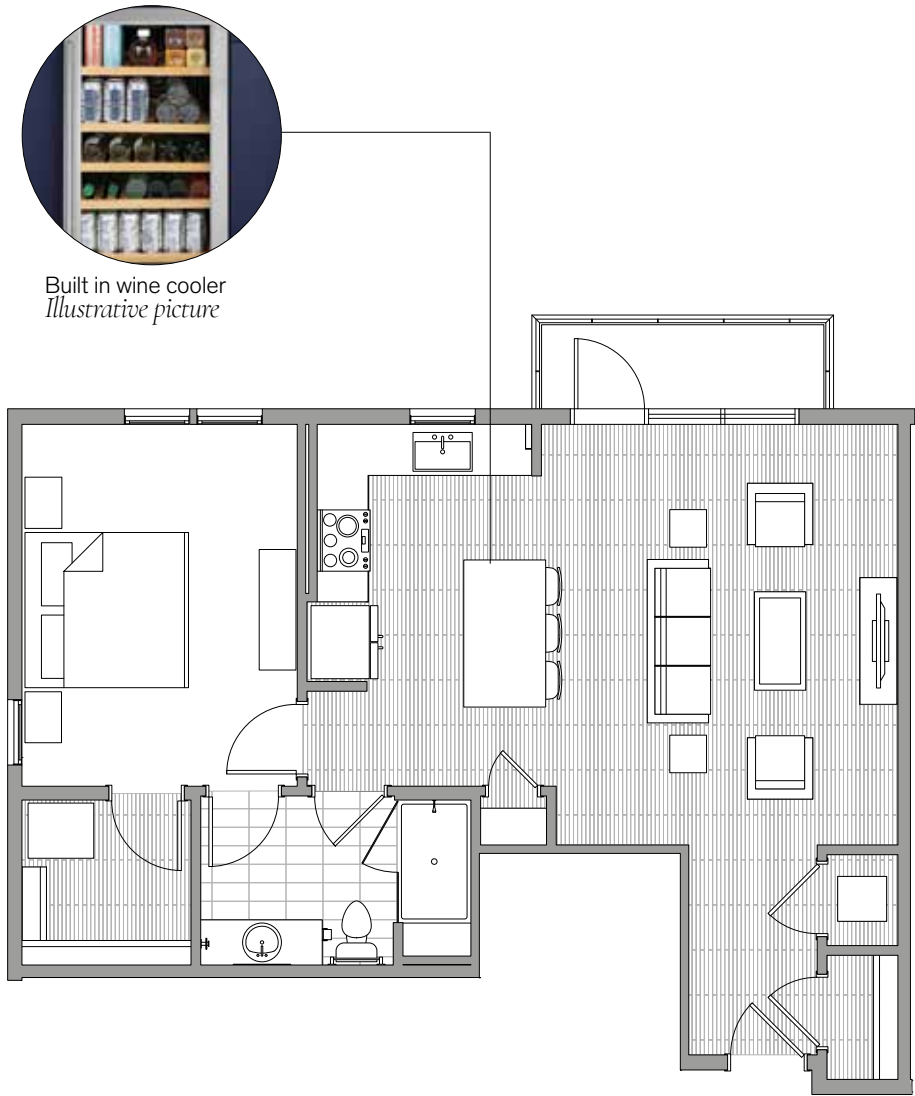
LVT Light Wood  
Flooring

Units 259, 261, 262,  
459, 461, 462, 342,  
343, 542, 543, 113,  
114, 116, 117, 413,  
414, 416, 417

# Type A7

847 SQ.FT.

- 1 BEDROOM
- 1 BATHROOM

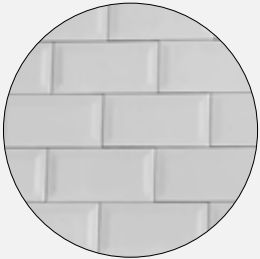


PACKAGE A

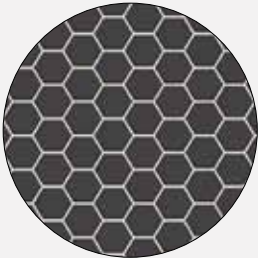


Kitchen Backsplash  
Herringbone Pattern

PACKAGE B



Kitchen Backsplash  
Horizontal Stack



Shower pan Tile  
Pattern



Shower pan Tile  
Pattern



LVT Dark Wood  
Flooring



LVT Light Wood  
Flooring

Units 211, 311, 511

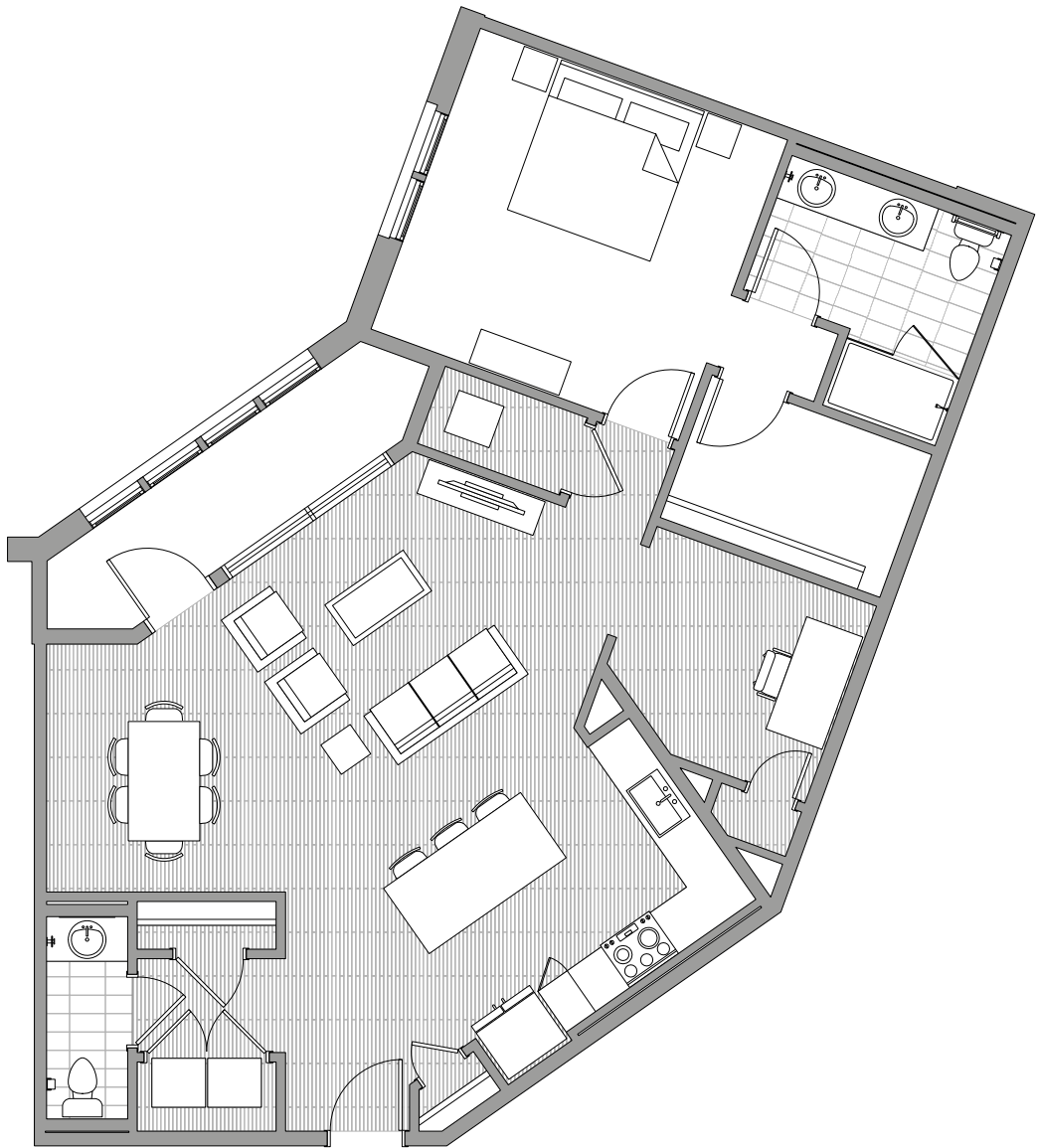
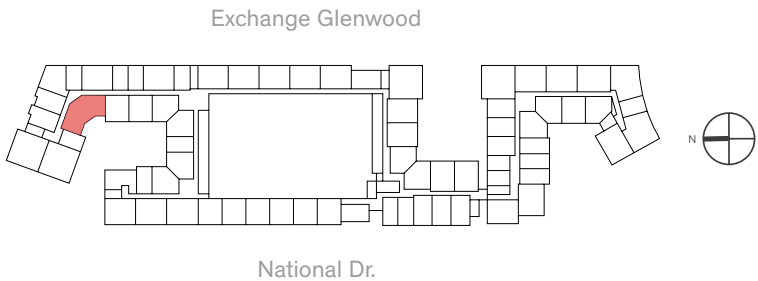
Unit 411



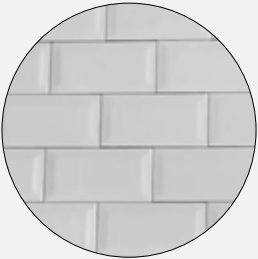
# Type A8

1189 SQ.FT.

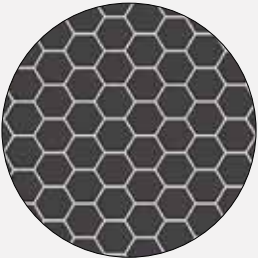
- 1 BEDROOM
- 1.5 BATHROOM



PACKAGE B



Kitchen Backsplash  
Horizontal Stack



Shower pan Tile  
Pattern



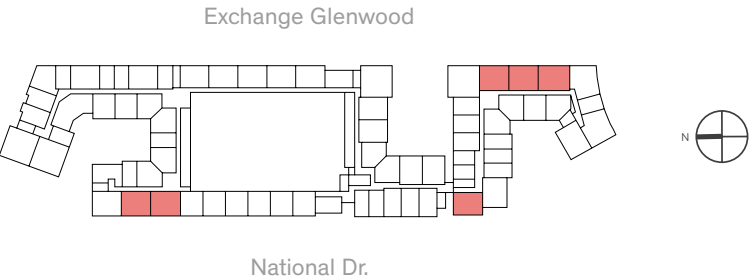
LVT Light Wood  
Flooring

Unit 120

# Type B1

967 SQ.FT.

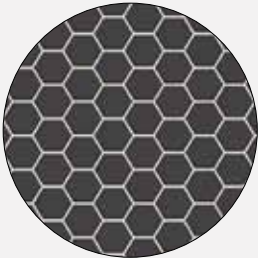
- 2 BEDROOM
- 2 BATHROOM



PACKAGE A



Kitchen Backsplash  
Herringbone Pattern



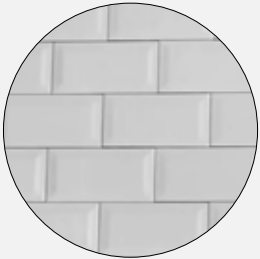
Shower pan Tile  
Pattern



LVT Dark Wood  
Flooring

Units 352, 353, 354, 367,  
552, 553, 567, 209, 308,  
309, 508, 509

PACKAGE B



Kitchen Backsplash  
Horizontal Stack



Shower pan Tile  
Pattern



LVT Light Wood  
Flooring

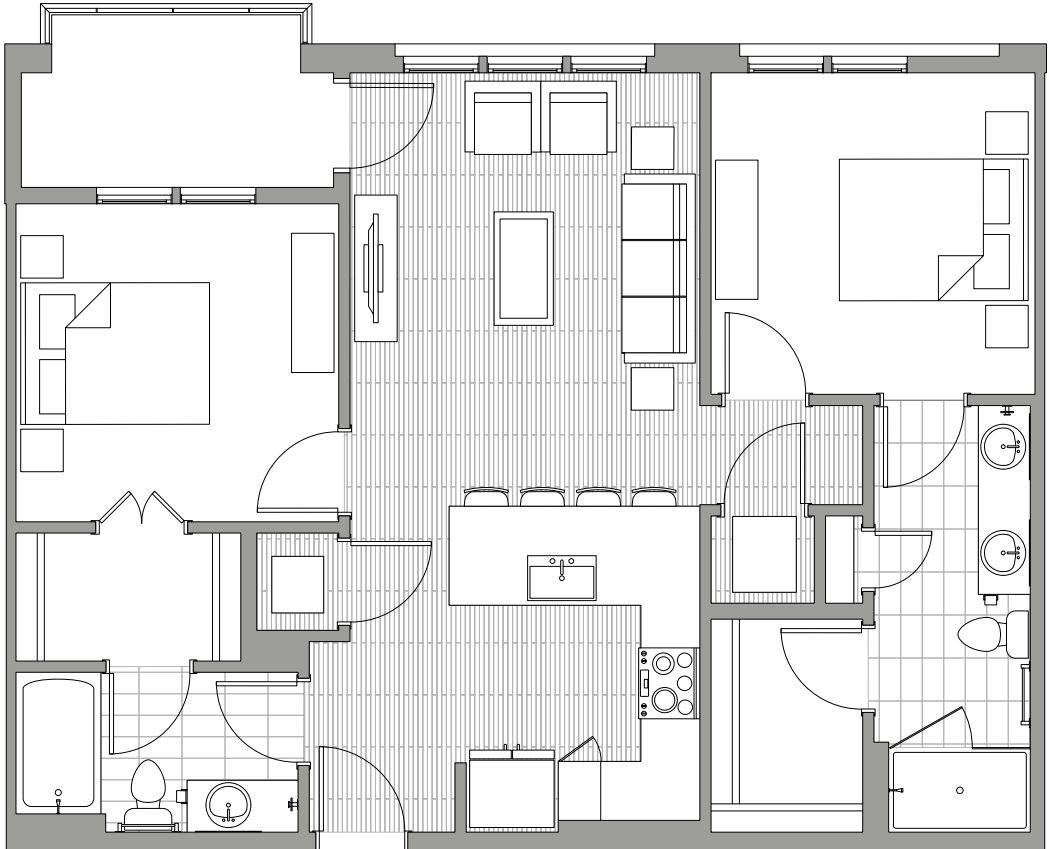
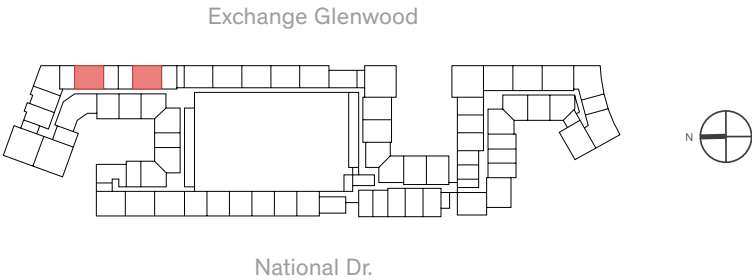
Units 252, 253, 254,  
267, 452, 453, 454, 467,  
108, 109, 408, 409



# Type B1<sup>M1</sup>

994 SQ.FT.

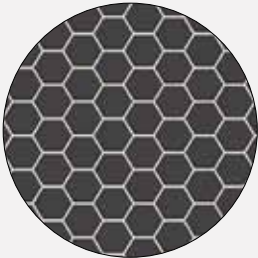
- 2 BEDROOM
- 2 BATHROOM



PACKAGE A



Kitchen Backsplash  
Herringbone Pattern



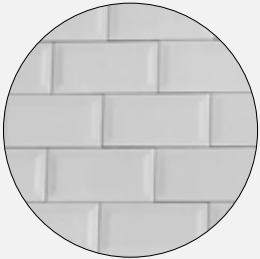
Shower pan Tile  
Pattern



LVT Dark Wood  
Flooring

Units 228, 231, 328,  
331, 528, 531

PACKAGE B



Kitchen Backsplash  
Horizontal Stack



Shower pan Tile  
Pattern



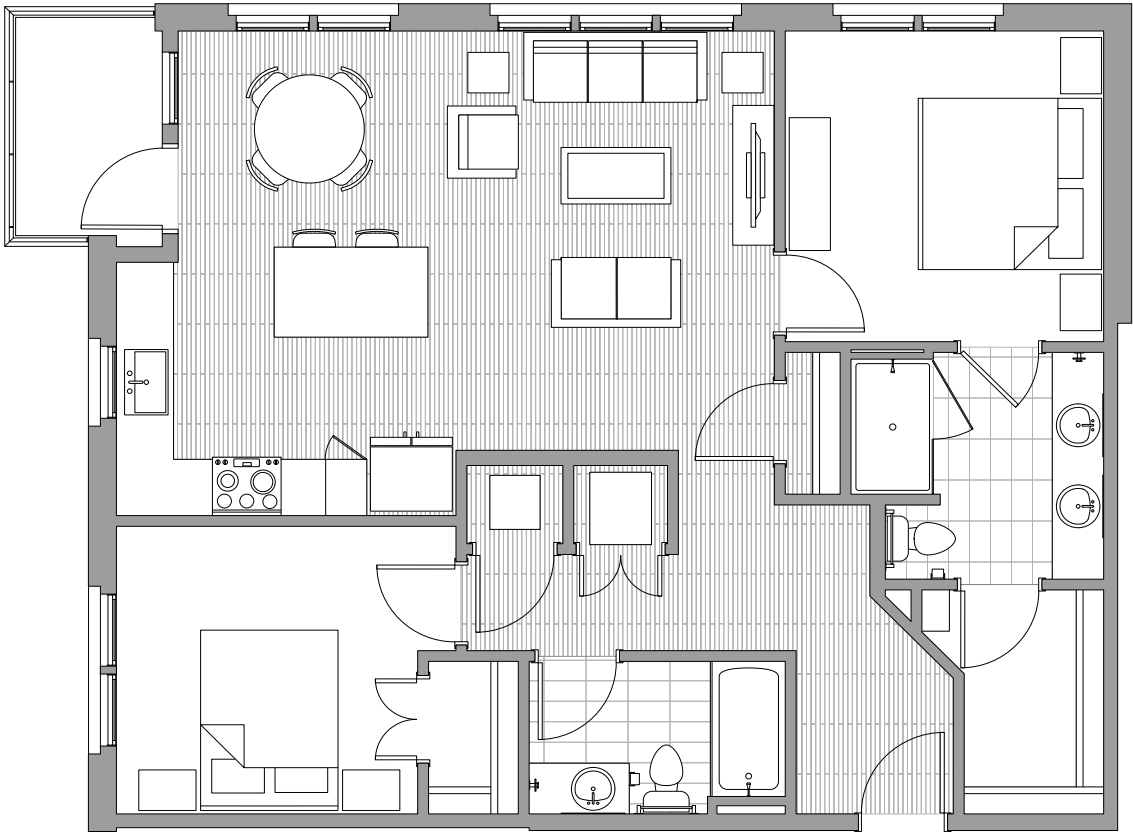
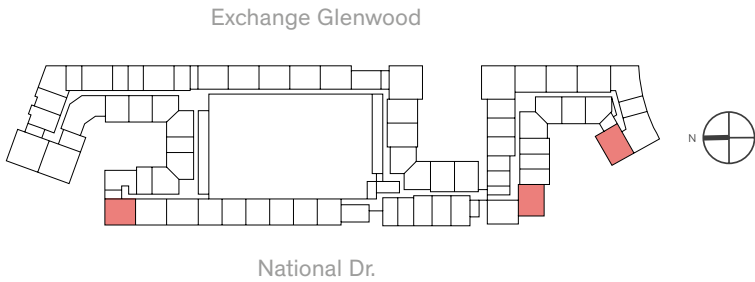
LVT Light Wood  
Flooring

Unit 428

# Type B2

1091 SQ.FT.

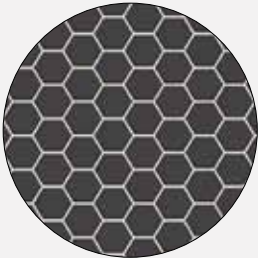
- 2 BEDROOM
- 2 BATHROOM



PACKAGE A



Kitchen Backsplash  
Herringbone Pattern



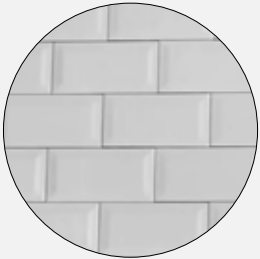
Shower pan Tile  
Pattern



LVT Dark Wood  
Flooring

Units 358, 366, 558,  
566, 210, 310, 510

PACKAGE B



Kitchen Backsplash  
Horizontal Stack



Shower pan Tile  
Pattern



LVT Light Wood  
Flooring

Units 258, 266, 458,  
466, 110, 410



# Type B4

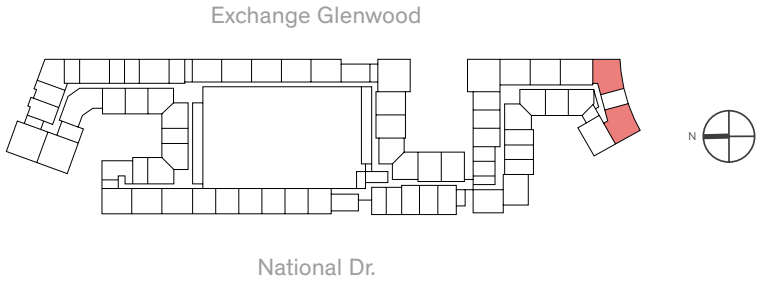
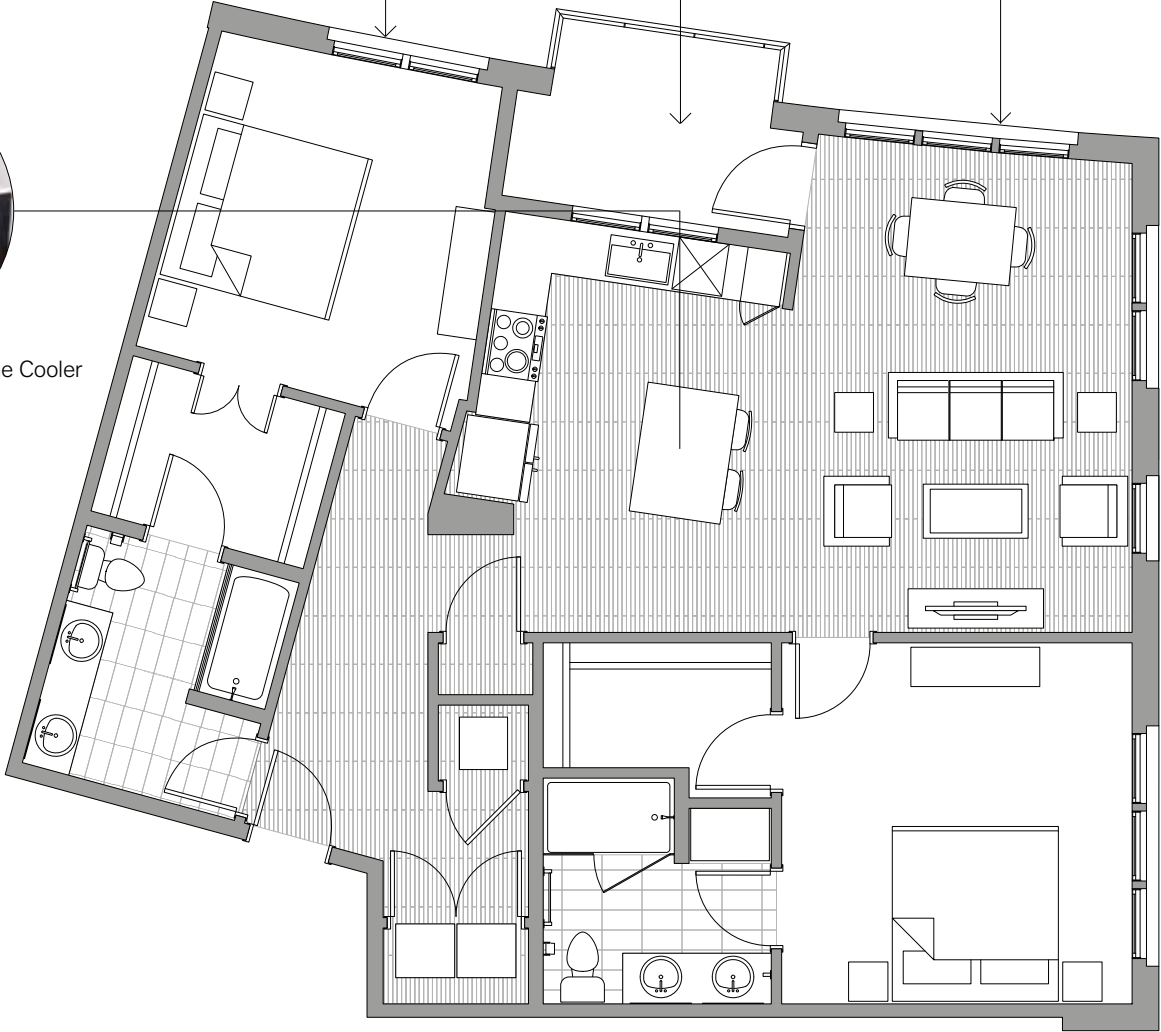
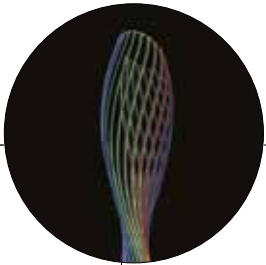
1283 SQ.FT.

- 2 BEDROOM
- 2 BATHROOM



Dry Bar with Built-in Wine Cooler  
*Illustrative picture*

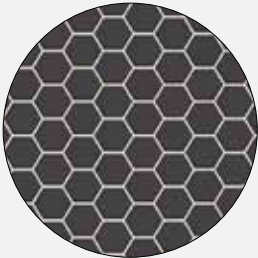
Sculpture Park  
View



PACKAGE A



Kitchen Backsplash  
Herringbone Pattern



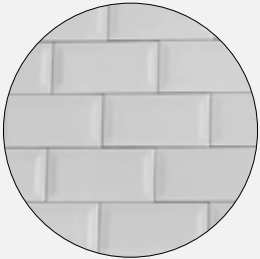
Shower pan Tile  
Pattern



LVT Dark Wood  
Flooring

Units 355, 357, 555, 557

PACKAGE B



Kitchen Backsplash  
Horizontal Stack



Shower pan Tile  
Pattern



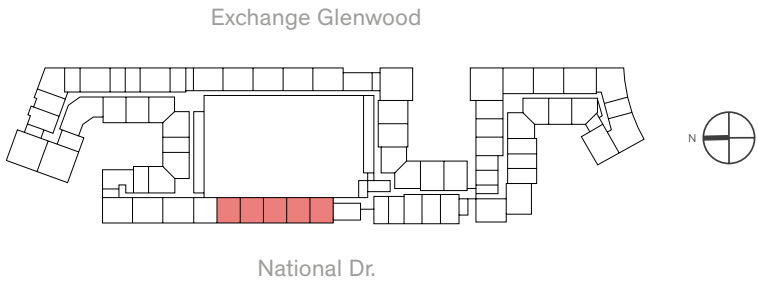
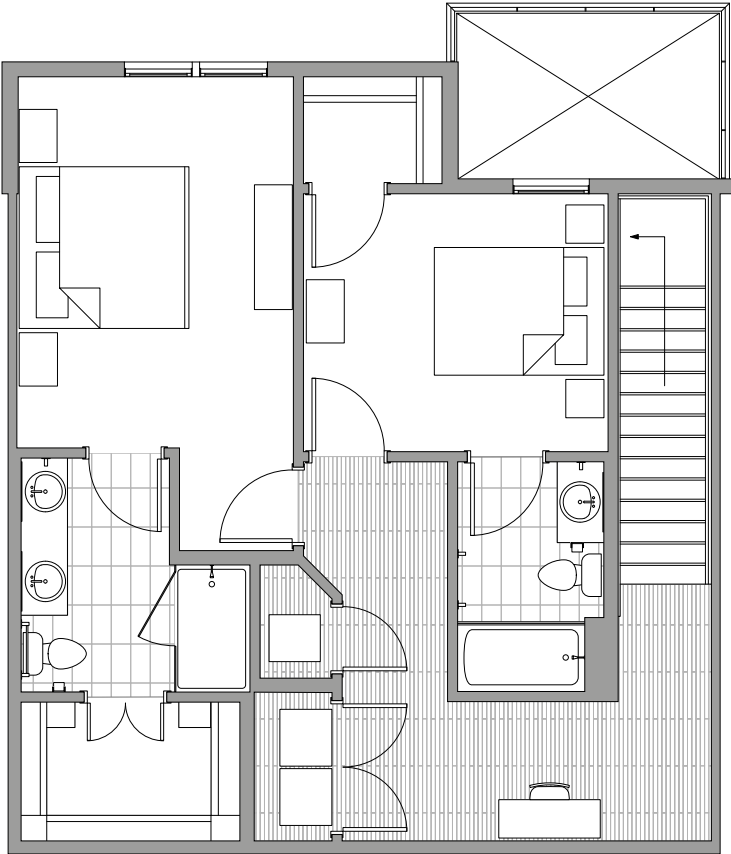
LVT Light Wood  
Flooring

Units 255, 257, 455, 457

# Type B5 *Townhouse*

1403 SQ.FT.

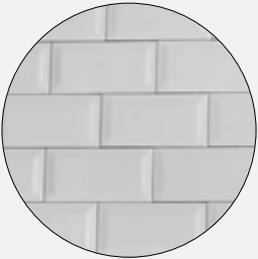
- 2 BEDROOM
- 2.5 BATHROOM



Built in wine cooler  
*Illustrative picture*

**THE RESIDENCES**  
GLENWOOD PLACE

## PACKAGE B



Kitchen Backsplash  
Horizontal Stack



Shower pan Tile  
Pattern



LVT Light Wood  
Flooring

Units 102, 103, 104,  
105, 106, 402, 403,  
404, 405, 406

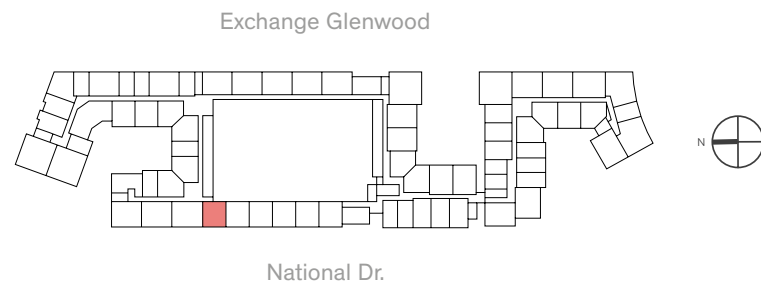
RESIDENCESGLENWOODPLACE.COM

RENDERINGS ARE AN ARTIST'S CONCEPTION AND ARE INTENDED ONLY AS A GENERAL REFERENCE.  
FEATURES, MATERIALS, FINISHES AND LAYOUT OF SUBJECT UNIT MAY BE DIFFERENT THAN SHOWN.

# Type B5<sup>M1</sup> Townhouse

1465 SQ.FT.

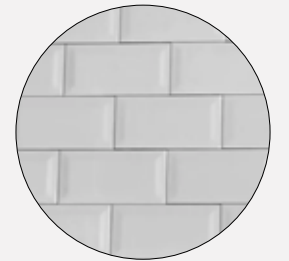
2 BEDROOM  
2.5 BATHROOM



Built in wine cooler  
*Illustrative picture*

**THE RESIDENCES**  
GLENWOOD PLACE

## PACKAGE B



Kitchen Backsplash  
Horizontal Stack



Shower pan Tile  
Pattern



LVT Light Wood  
Flooring

Units 107, 407

RESIDENCESGLENWOODPLACE.COM

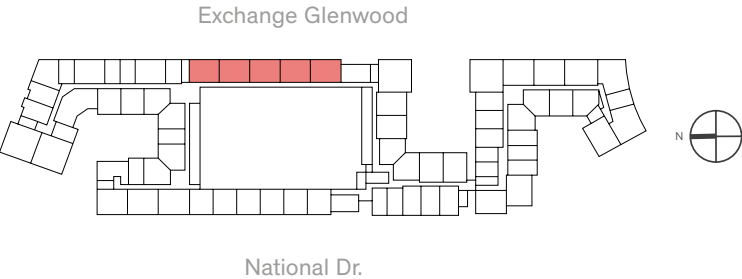
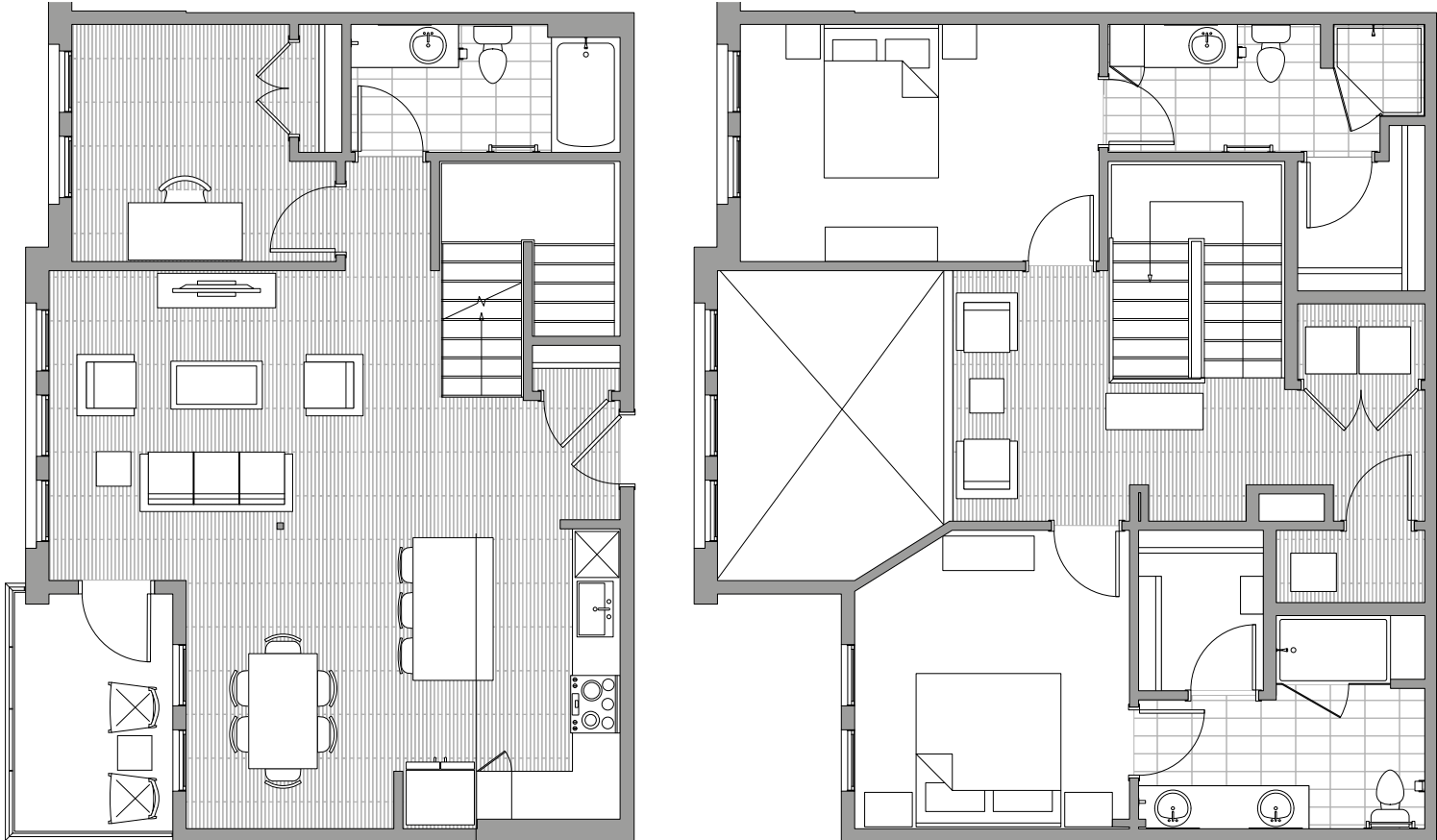
RENDERINGS ARE AN ARTIST'S CONCEPTION AND ARE INTENDED ONLY AS A GENERAL REFERENCE.  
FEATURES, MATERIALS, FINISHES AND LAYOUT OF SUBJECT UNIT MAY BE DIFFERENT THAN SHOWN.



# Type B6 Townhouse

1720 SQ.FT.

- 2 BEDROOM
- 3 BATHROOM



Built in wine cooler  
*Illustrative picture*

**PACKAGE A**



Kitchen Backsplash  
Herringbone Pattern



Shower pan Tile  
Pattern



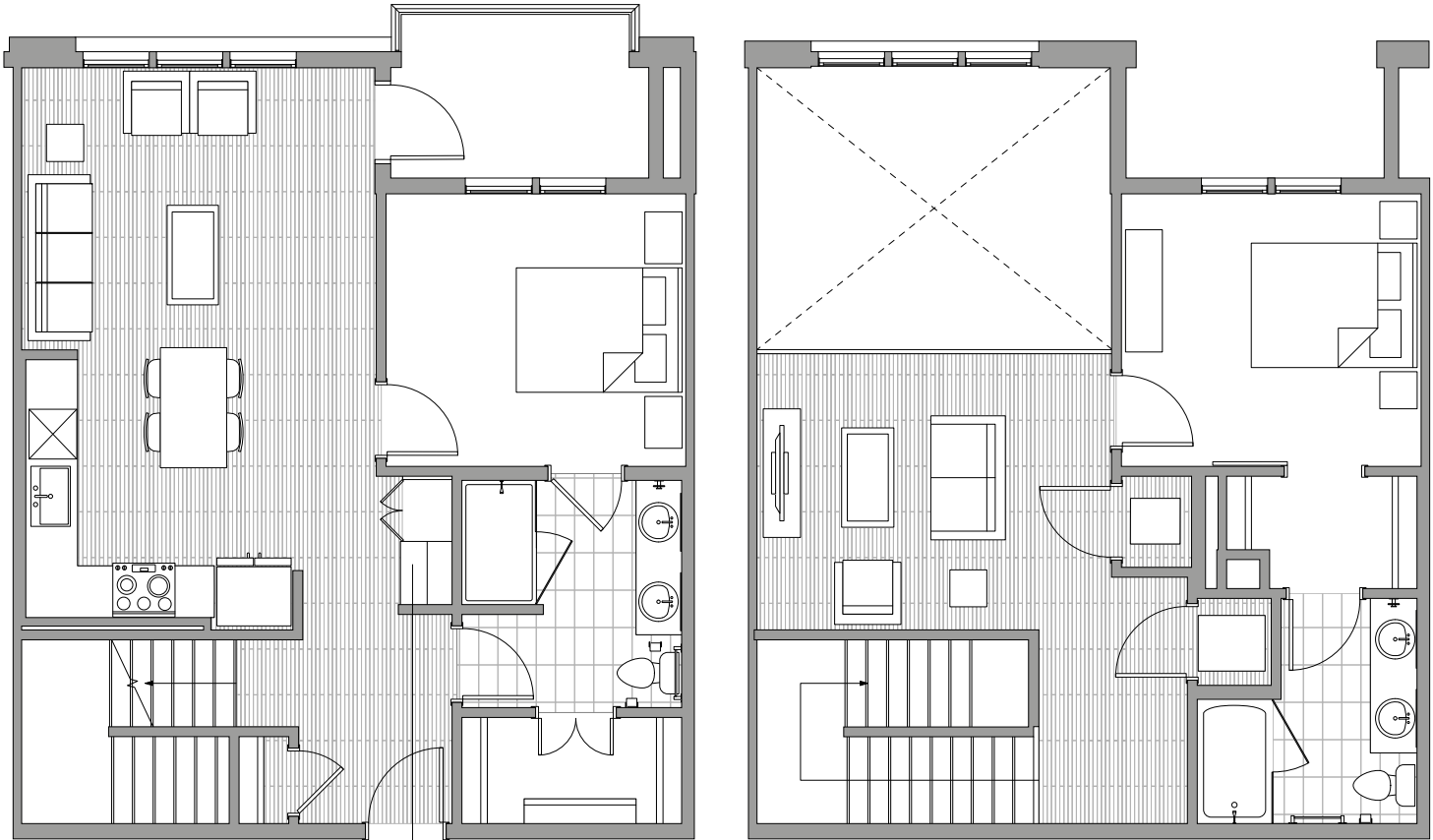
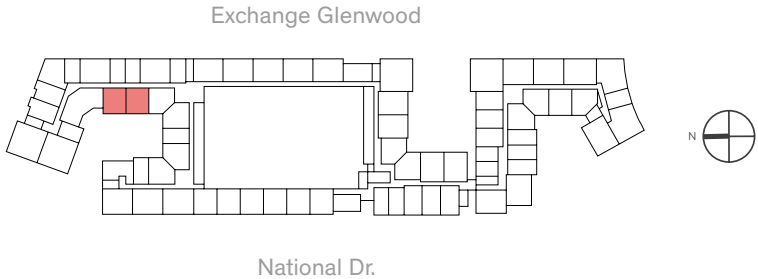
LVT Dark Wood  
Flooring

Units 233, 234, 235,  
236, 237, 433, 434,  
435, 436, 437

Type B7 Townhouse

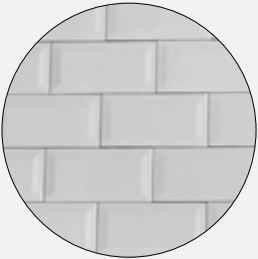
1335 SQ.FT.

- 2 BEDROOM
- 2 BATHROOM

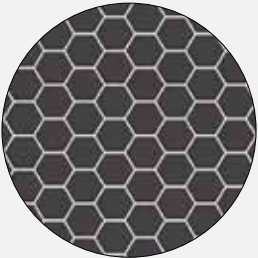


Dry Bar with Built-in Wine Cooler  
*Illustrative picture*

PACKAGE B



Kitchen Backsplash  
Horizontal Stack



Shower pan Tile  
Pattern



LVT Light Wood  
Flooring

Units 118, 119, 418, 419

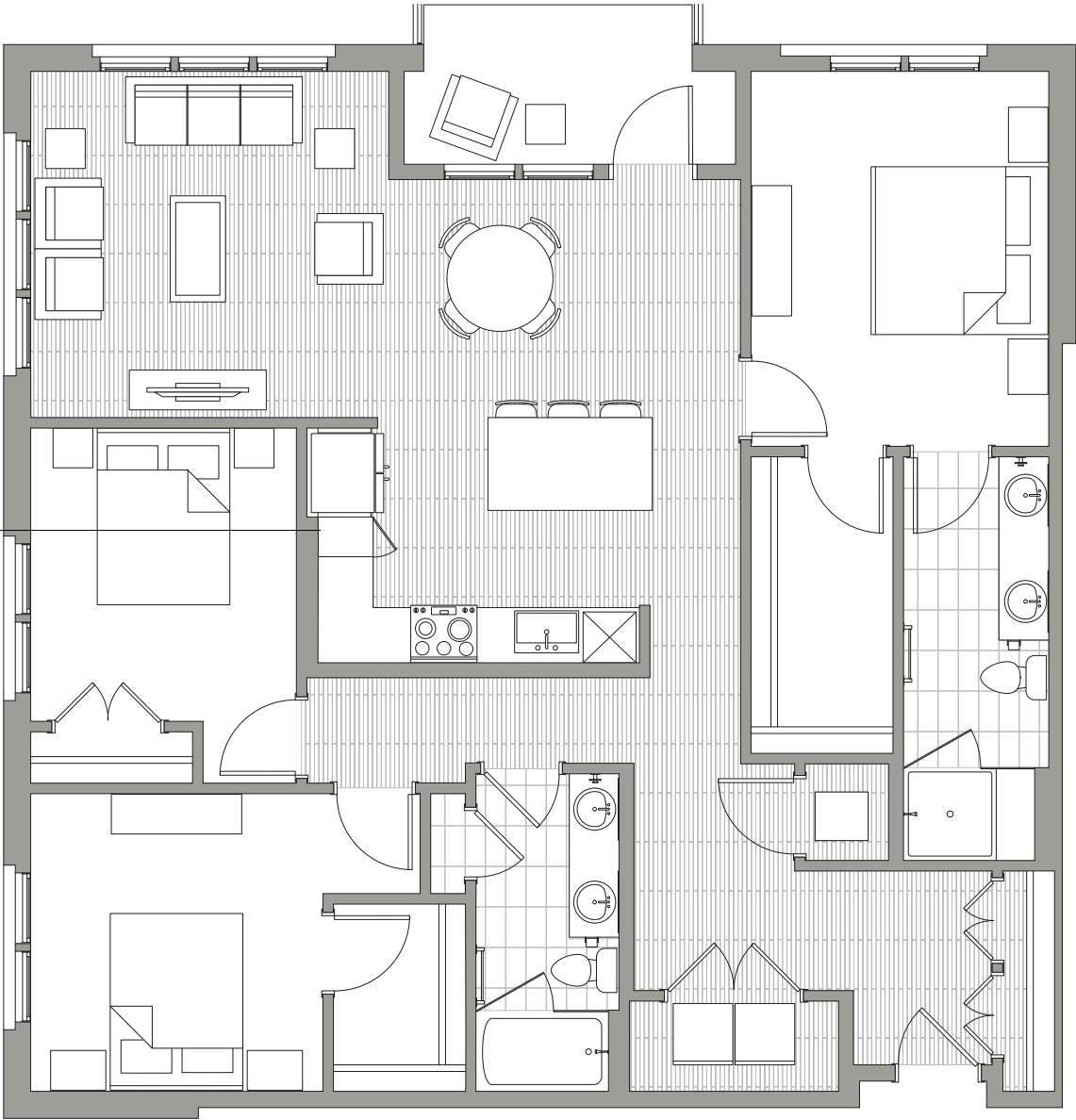
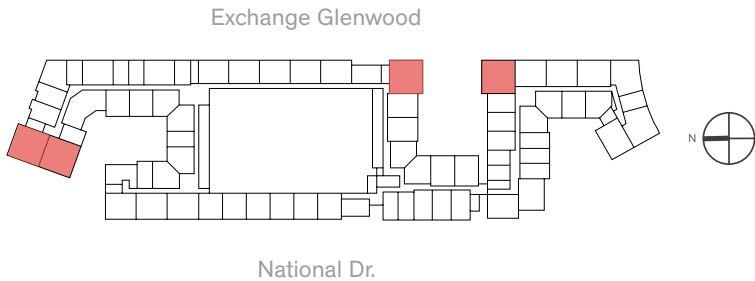
# Type C1

1500 SQ.FT.

- 3 BEDROOM
- 2 BATHROOM



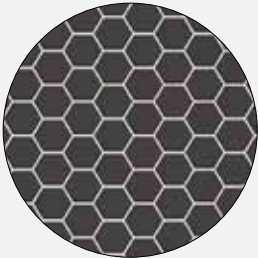
Dry Bar with Built-in Wine Cooler  
*Illustrative picture*



PACKAGE A



Kitchen Backsplash  
Herringbone Pattern



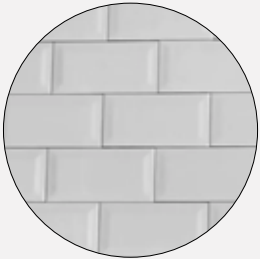
Shower pan Tile  
Pattern



LVT Dark Wood  
Flooring

Units 551, 439, 539,  
222, 223, 322, 323,  
522, 523

PACKAGE B



Kitchen Backsplash  
Horizontal Stack



Shower pan Tile  
Pattern



LVT Light Wood  
Flooring

Units 251, 451, 339,  
122, 123, 422, 423



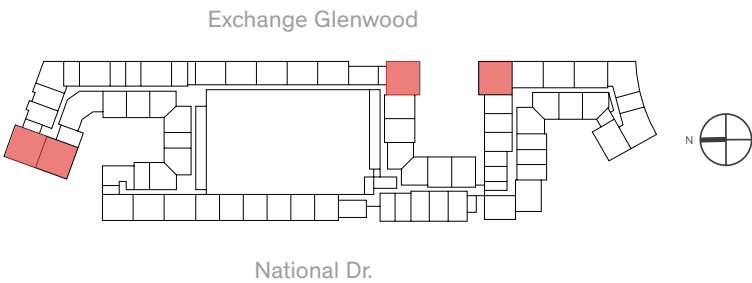
# Type C2 Townhouse

1792 SQ.FT.

M1 1792 SQ.FT.

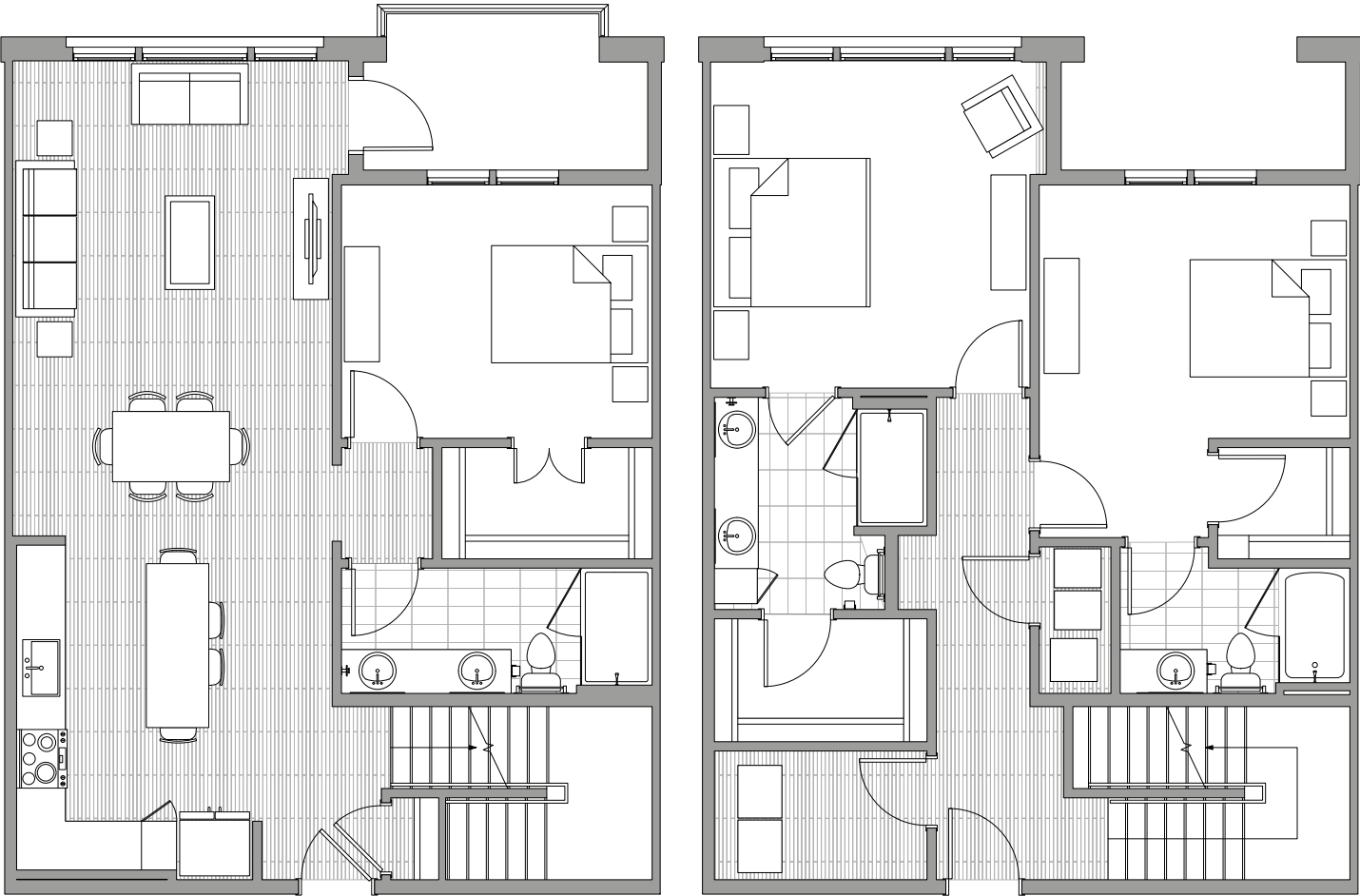
Units 244, 245, 240, 241

- 3 BEDROOM
- 3 BATHROOM



The orientation only corresponds to the units 240, 241, 244, 245, 440, 441, 444, 445

POOL



THE RESIDENCES  
GLENWOOD PLACE

## PACKAGE A



Kitchen Backsplash  
Herringbone Pattern



Shower pan Tile  
Pattern



LVT Dark Wood  
Flooring

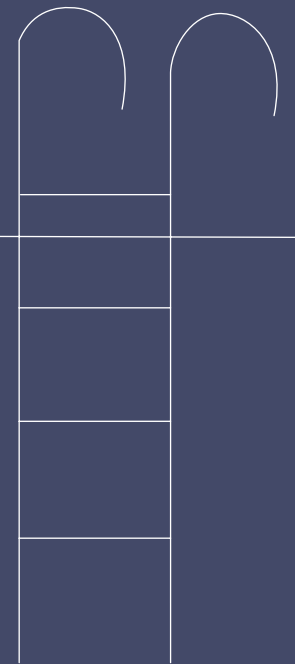
Units 240, 241, 244, 245, 440, 441, 444, 445

RESIDENCESGLENWOODPLACE.COM

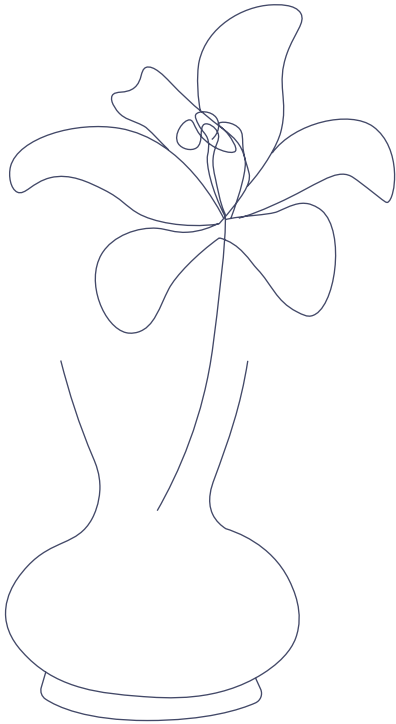
RENDERINGS ARE AN ARTIST'S CONCEPTION AND ARE INTENDED ONLY AS A GENERAL REFERENCE. FEATURES, MATERIALS, FINISHES AND LAYOUT OF SUBJECT UNIT MAY BE DIFFERENT THAN SHOWN.

08

*Amenities*







FROM THE 5TH FLOOR LOUNGE OVERLOOKING THE PLAZA TO THE COURTYARD POOL AND POOLSIDE TERRACE, CASUAL CONTEMPORARY ELEGANCE DEFINES THE EXTENSIVE, EXCLUSIVE COLLECTION OF INDOOR AND OUTDOOR AMENITIES AT THE RESIDENCES AT GLENWOOD PLACE.





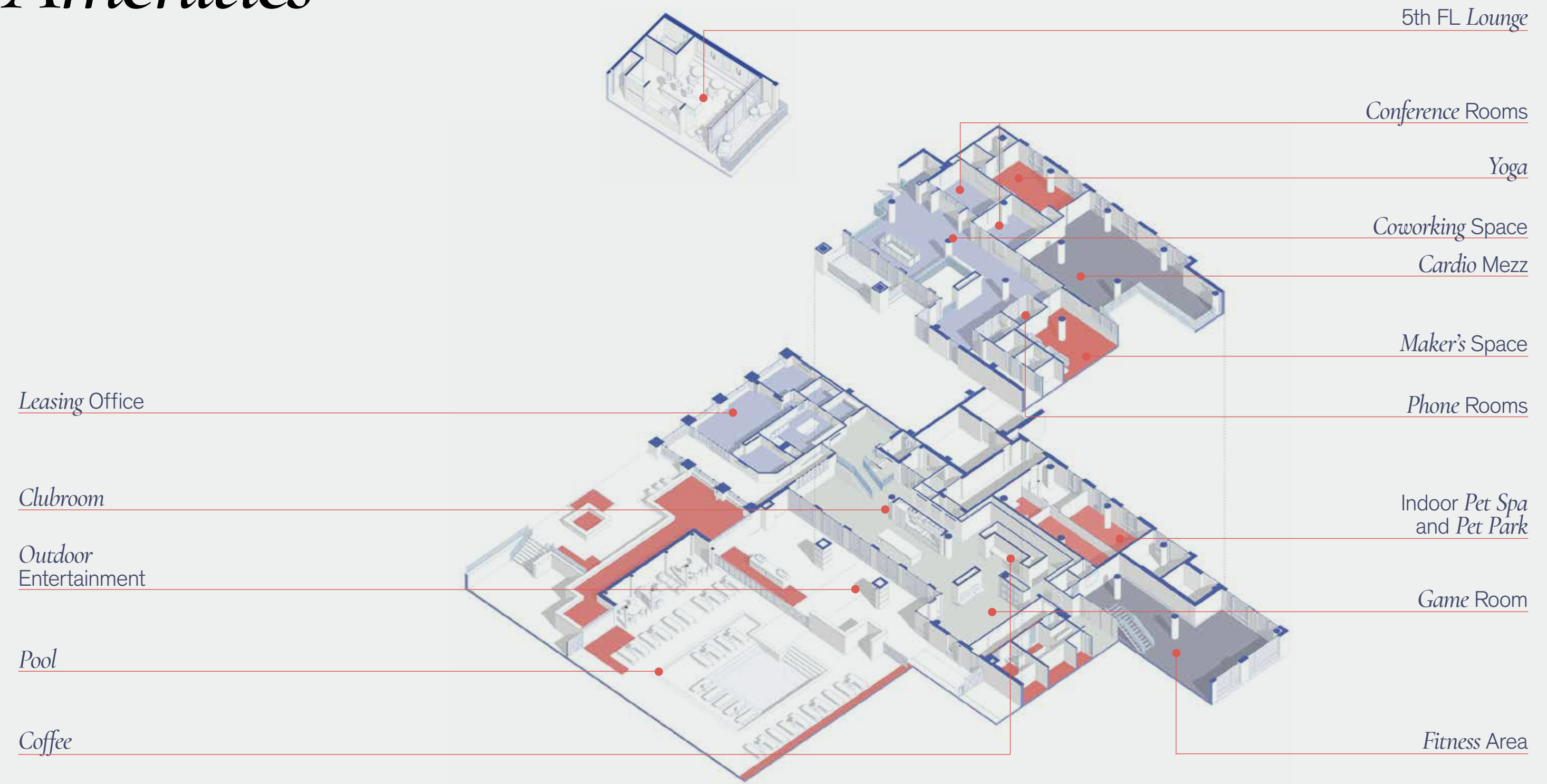


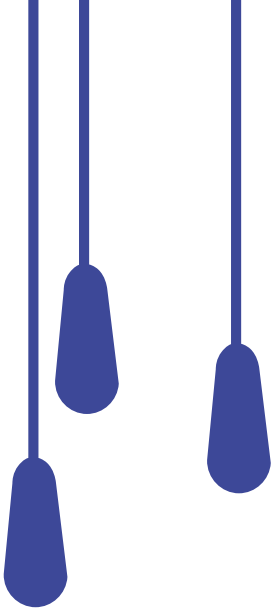
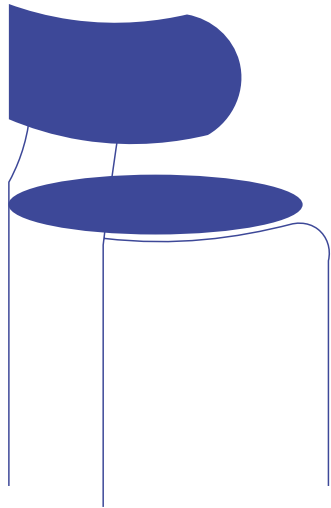
*Fully-amenitized  
Living meets  
Private Club Sociability*

POLISHED CONCRETE FLOORING, EXPOSED BRICK WALLS, RICH TEXTILES, WARM WOOD FURNISHINGS, AND METAL ACCENTS ARE AMONG THE THOUGHTFUL DETAILS THROUGHOUT INDOOR SPACES DESIGNED FOR FITNESS, RELAXATION, DINING, AND WORK-FROM-HOME ACTIVITIES.

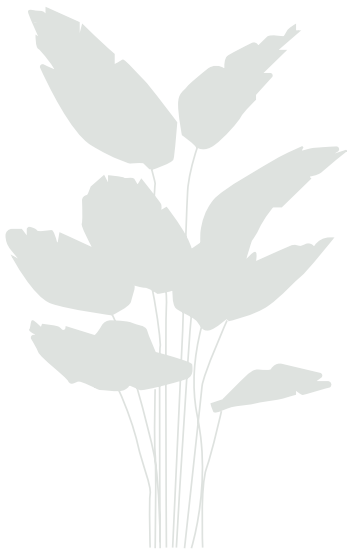
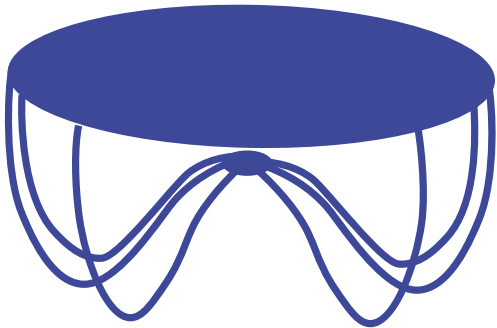
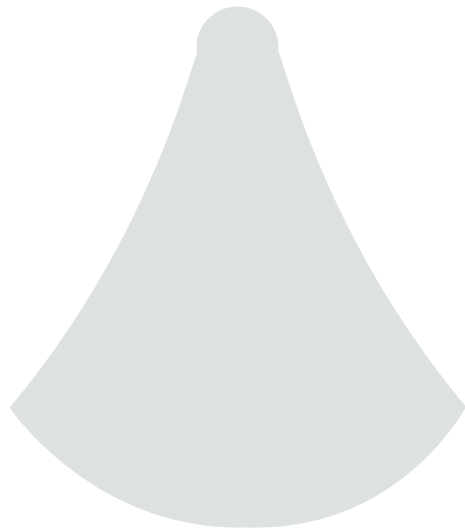


# Amenities





These *Residences*  
set a new standard  
for *comfort luxury*  
*living* in Raleigh





# Amenities

## 01 Two-Level *Fitness Studio*



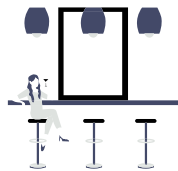
- 1 Cardio mezzanine
- 2 Extensive strength training zone
- 3 Hydrow rowing system
- 4 Cross-training cage
- 5 Designated boxing space
- 6 Mirror interactive fitness system
- 7 Yoga / Spin studio with Echelon Smart Connect Bikes

## 05 Co - Working *Spaces*



- 1 Custom co-working spaces throughout the building
- 2 Two fully enclosed conference rooms
- 3 Two phone/meeting rooms

## 02 Lounges & *Social Spaces*



- 1 Fifth-floor lounge overlooking the plaza
- 2 Clubroom with pool table, dual fireplace, and barista bar
- 3 Maker's Space/ Workshop
- 4 Demonstration kitchen
- 5 Wine Room with speakeasy-style banquettes
- 6 Indoor pet park and spa

## 06 Lifestyle *Conveniences & Security*



- 1 Best-in-class Luxor package room and locker system with climate control modules for perishables such as food and flower deliveries
- 2 Key-fob and app-controlled building access
- 3 Enclosed, access-controlled parking deck with same-level access to residences

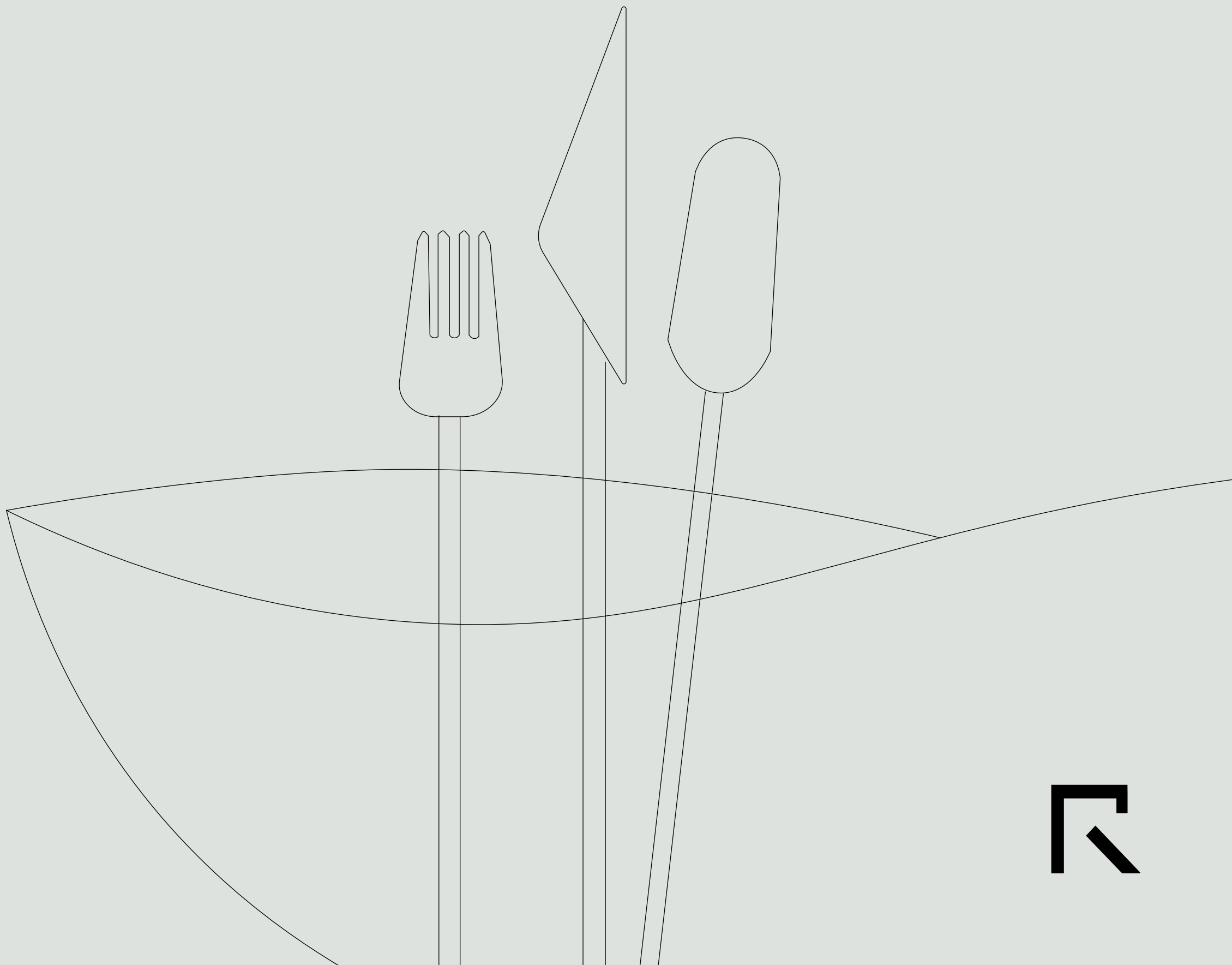
## 03 Outdoor *Living*



- 1 Salt-water pool with sun lounge
- 2 Garden with grill area and dining tables
- 3 Elevated terraces overlooking the garden
- 4 Private pool cabanas
- 5 Direct access to Raleigh Greenway

# 09

*Retail*



# Shopping & Dining



SUSHI MON



LADYFINGERS



IRON OAKS  
TAPROOM



/SÔST/



A VIBRANT COMMUNITY FILLED WITH SHOPS,  
CAFÉS, AND RESTAURANTS



Glenwood Place brings a boutique mindset together with big city sophistication to offer a neighborhood as cozy as it is exciting and conveniently connected. Landscaped pathways lead past colorful gardens, lively water features, and contemporary sculptures to a delightful mix of places to pick up groceries, dine, and socialize with friends and neighbors. With unparalleled access to the beltline and the greenway, outings and adventures are at your fingertips.



# 10

*The Team*



# The *Team*

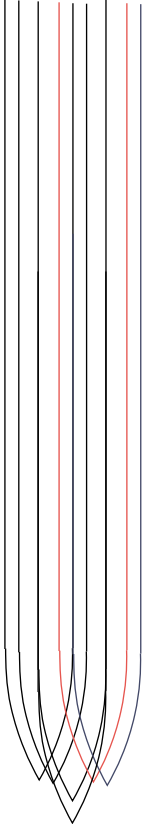
GRUBB VENTURES CREATES AND REDEVELOPS HIGH QUALITY COMMUNITIES IN INFILL LOCATIONS IN THE RESEARCH TRIANGLE REGION OF NORTH CAROLINA.

*Rebuild* / THE SURROUNDING NEIGHBORHOODS IN WHICH WE LIVE AND WORK.

*Renew* / DEVELOPMENTS WITH A NEW VISION AND PURPOSE.

*Rethink* / THE CURRENT USE OF OBSOLETE REAL ESTATE, IDENTIFY A HIGHER AND BETTER USE.

GRUBB VENTURES' DEVELOPMENTS HAVE ESTABLISHED A PROVEN TRACK RECORD OF AWARD WINNING, WELL EMBRACED, THOUGHTFULLY PLANNED RESIDENTIAL, COMMERCIAL AND RETAIL COMMUNITIES.



# Awards

2018

/ Sir Walter Raleigh Award Winner for Community Appearance (for Dock 1053)

2017

/ Triangle Crew Best Redevelopment (for Dock 1053)  
/ Multifamily Development of the Year from Triangle Business Journal (for Sojourn Lake Boone)

2014

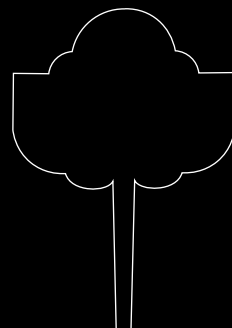
/ Triangle Commercial Association of Realtors (TCAR) Development of the Year Award (for 401 Oberlin)

2012

/ Triangle Commercial Real Estate Women (CREW) Champion Award for CREW Excellence  
/ Best Address (to Live!) by the readers of Midtown Magazine (for The Oaks at Fallon Park)



GLENWOOD PLACE



[residencesglenwoodplace.com](https://residencesglenwoodplace.com)



*Address*

3711 Exchange Glenwood Place, Suite 1000  
Raleigh NC 27612

*Email*

[info@theresidencesglenwood.com](mailto:info@theresidencesglenwood.com)